

- GENERAL NOTES:**
- TOPOGRAPHIC INFORMATION BASED ON SURVEY COMPLETED BY CBCL LIMITED (DATED NOVEMBER 12 & 16, 2021). MTM PROJECTION, ZONE 5, NAD 83 CGVD2013.
 - PLAN OF SUBDIVISION (PROPERTY LINE INFORMATION) BASED ON SURVEY COMPLETED ALLISON LAND SURVEYS LIMITED (DATED JANUARY 10, 2018). BEARINGS ARE GRID AND REFER TO ZONE 5, CENTRAL MERIDIAN 64° 30' WEST, NOVA SCOTIA 3° MTM PROJECTION (NAD83CSRS) EPOCH 2010, NSHPN 209616.
 - DRAWINGS IN GENERAL ARE TO SCALE BUT FIGURED DIMENSIONS TAKE PRECEDENCE. THE CONTRACTOR TAKES FULL RESPONSIBILITY FOR THE ACCURACY OF INFORMATION SCALED FROM THE DRAWINGS.
 - ALL DIMENSION USE METRIC UNITS. DIMENSIONS SHOWN IN MILLIMETERS AND POINT ELEVATIONS IN METERS (UNLESS NOTED OTHERWISE).
 - IN PLACING HIS BID, THE CONTRACTOR IS DEEMED TO HAVE VISITED THE SITE AND DONE HIS OWN INVESTIGATIONS OF THE WORK TO BE COMPLETED.
 - EXISTING PIPING, VALVES, FITTINGS, ETC. ARE SHOWN AS APPROXIMATE ONLY. CONTRACTOR TO CONFIRM SIZE AND LOCATION OF ALL EXISTING INFRASTRUCTURE AND NOTIFY THE ENGINEER, IN WRITING, OF ANY DISCREPANCIES PRIOR TO CONSTRUCTION. TAKE ALL NECESSARY PRECAUTIONS TO AVOID DISTURBING EXISTING SERVICES/SYSTEMS NOT DESIGNATED FOR REMOVAL.
 - ALL WORK TO BE EXECUTED IN A SAFE AND ORDERLY MANNER. CONTRACTOR TO MAINTAIN A CLEAN JOBSITE AND REMOVE DEBRIS/WASTE FROM SITE ON A DAILY BASIS. WASTE DISPOSAL TO BE IN ACCORDANCE WITH ENVIRONMENTAL REGULATIONS. WASTE TRANSPORTATION AND DISPOSAL IS THE RESPONSIBILITY OF THE CONTRACTOR.
 - NO CHANGES OR REVISIONS TO THE WORK SHALL BE EXECUTED WITHOUT THE APPROVAL OF THE ENGINEER.
 - ALL WORK TO BE CONDUCTED IN ACCORDANCE WITH STANDARD INDUSTRY PRACTICE.
 - ALL WORK TO BE CONDUCTED IN ACCORDANCE WITH ALL PROVINCIAL HEALTH AND SAFETY ORDINANCES & REGULATIONS, AS WELL AS ALL PROVINCIAL AND MUNICIPAL REGULATIONS, BYLAWS AND ORDINANCES TO THE APPROVAL OF THE AUTHORITY HAVING JURISDICTION.
 - CONTRACTOR TO COORDINATE THE LOCATION OF THE HOARDING AREA WITH THE OWNER. PROTECT ALL MATERIALS, EQUIPMENT AND ADJACENT AREAS FROM DAMAGE.
 - ALL DISTURBED AREAS SHALL BE REINSTATED TO ORIGINAL CONDITION TO THE APPROVAL OF THE ENGINEER. REPAIRS TO EXISTING INFRASTRUCTURE DAMAGED DURING CONSTRUCTION SHALL BE AT THE EXPENSE OF THE CONTRACTOR.
 - THE EXISTING FACILITY IS PART OF A FUNCTIONING WASTEWATER TREATMENT PLANT AND IS TO REMAIN OPERATIONAL FOR THE DURATION OF CONSTRUCTION. MINIMIZE AND SCHEDULE DISTURBANCES TO EXISTING SYSTEMS AND PROVIDE ACCESS TO OPERATIONS STAFF FOR ROUTINE MAINTENANCE AND INSPECTION. SITE ACTIVITIES AFFECTING THE EXISTING TREATMENT PLANT SHALL BE COORDINATED WITH THE OWNER IN ADVANCE OF UNDERTAKING THE WORK.
 - CONTRACTOR SHALL COORDINATE WITH THE PROCESS EQUIPMENT SUPPLIERS TO ENSURE THE SCOPE OF SUPPLY IS COMPLETE IN EVERY ASPECT FOR THE EQUIPMENTS INTENDED USE AND OPERATION ON THE WHOLE.
- WORK INCLUDES:**
- DEWATERING OF ANY AND ALL EXCAVATIONS REQUIRED DURING THE COURSE OF THE WORK, AND FOR THE DURATION OF THE WORK.
 - BYPASS PUMPING, HAULING OF SEWAGE AND ANY OTHER TEMPORARY SET-UPS REQUIRED DURING CONSTRUCTION TO MAINTAIN OPERATION OF THE EXISTING TREATMENT FACILITY.
 - BYPASS/TEMPORARY PUMPING TO INCLUDE A SPARE BACK-UP PUMP ON-SITE AND READY FOR USE.
 - REINSTATEMENT AND RESTORATION OF ALL DISTURBED SURFACES.
 - TRAFFIC CONTROL AND MANAGEMENT OF A SAFE WORK SITE.

NOT FOR
CONSTRUCTION

0	ISSUED FOR TENDER	MAY 20/22	DAT
No.	Description	Date	By

Revision or Issue

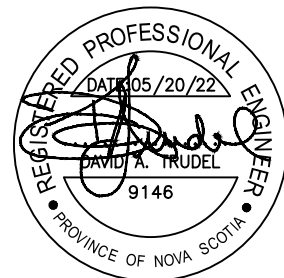


MUNICIPALITY OF EAST HANTS

SHUBENACADIE WWTP
REPLACEMENT

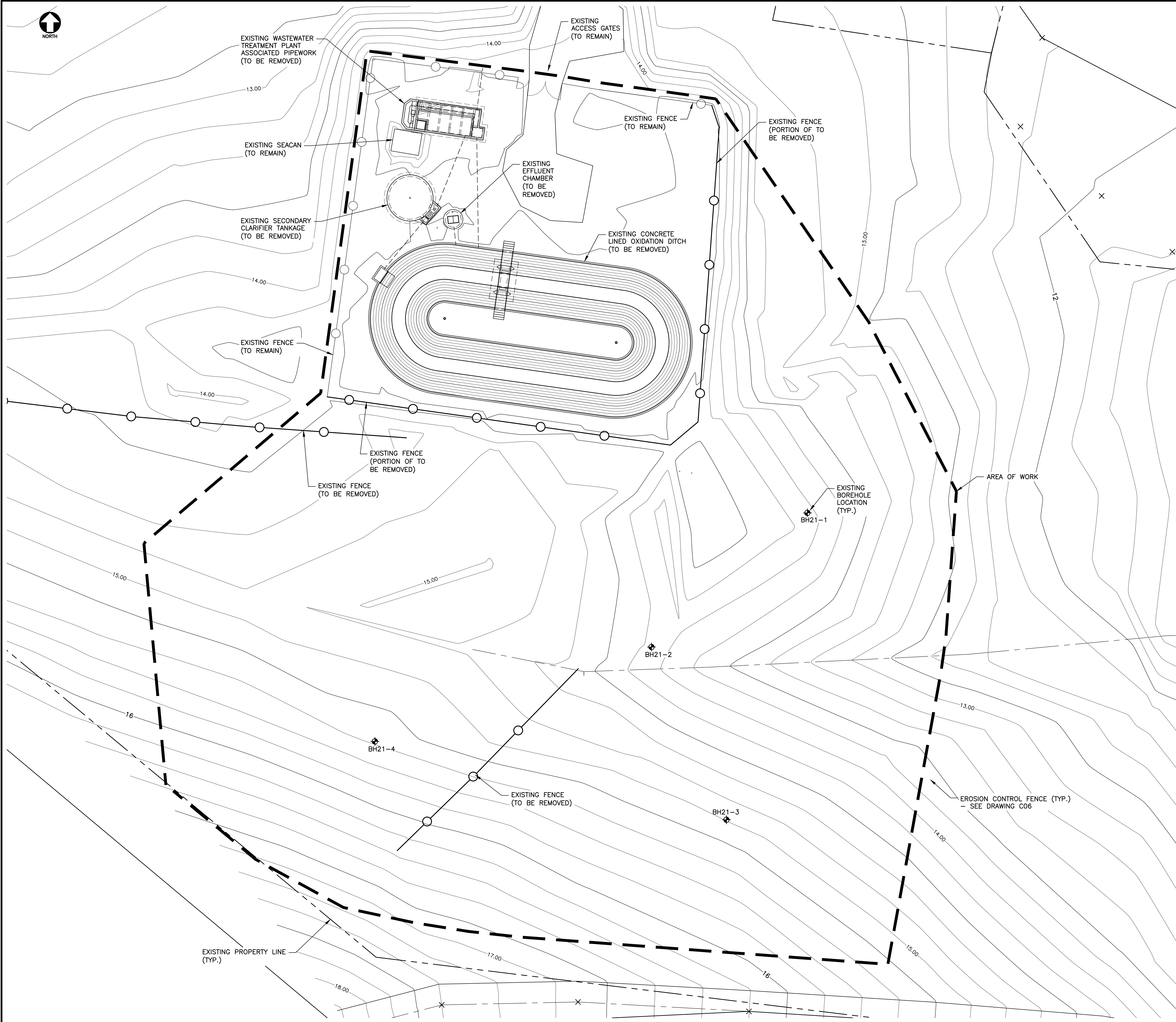
CIVIL

GENERAL ARRANGEMENT
SITE PLAN



CBCL No. 210814.01	Contract No. 210814
Date NOV 2021	Scale 1:1000
Designed DAT	Drawn MAA
Checked MA	Approved DAT
Sheet No. 1	of 8

GA1



DEMOLITION AND REMOVALS NOTES:

1. PRIOR TO UNDERTAKING DEMOLITION AND REMOVALS, THE CONTRACTOR SHALL SUBMIT A PLAN/SCHEDULE OUTLINING THE SWITCHOVER PROCESS. PLAN/SCHEDULE TO BE UPDATED AND/OR REVISED AS CONSTRUCTION PROGRESSES.
2. CONTRACTOR TO COORDINATE WITH THE OWNER FOR SALVAGE OF EXISTING EQUIPMENT. OWNER WILL PROVIDE LIST OF EQUIPMENT FOR SALVAGE TO THE CONTRACTOR AND DESIGNATE A LOCATION ON-SITE FOR STORAGE OF SALVAGED EQUIPMENT. EQUIPMENT NOT DESIGNATED FOR SALVAGE SHALL BE TRANSPORTED OFF-SITE FOR DISPOSAL.
3. INFRASTRUCTURE REQUIRING DEMOLITION AND REMOVALS INCLUDE, BUT ARE NOT LIMITED TO, THE FOLLOWING:
 - a. CHAIN LINK FENCE (PORTION OF);
 - b. CONCRETE LINED OXIDATION DITCH & EFFLUENT CHAMBER;
 - c. ASPIRATORS/AERATORS;
 - d. SECONDARY CLARIFIER TANKAGE;
 - e. SECONDARY CLARIFIER MECHANISM;
 - f. SUBMERSIBLE SLUDGE PUMPS;
 - g. CONCRETE PUMP CHAMBER;
 - h. CHLORINE CONTACT CHAMBER;
 - i. CONTROL BUILDING;
 - j. PIPEWORK;
 - k. HANDRAILS/CATWALKS/BRIDGES; AND
 - l. ELECTRICAL/INSTRUMENTATION (SEE E & J SERIES DRAWINGS).
4. UPON COMPLETION OF CLEAN WATER TESTING/COMMISSIONING, CONTRACTOR TO TRANSFER CONTENTS OF EXISTING OXIDATION DITCH TO NEW SBR TANKS. CONTENTS OF SECONDARY CLARIFIER (SETTLED SLUDGE) TO BE TRANSFERRED TO NEW SLUDGE HOLDING TANK #1. CONTRACTOR'S PUMPING ARRANGEMENT TO INCLUDE A SPARE (BACK-UP) PUMP ON-SITE AND READY FOR USE. REMAINING ACCUMULATED DEBRIS WITHIN TANKAGE TO BE TRANSPORTED OFF-SITE FOR DISPOSAL.
5. FOLLOWING TRANSFER OF TANK CONTENTS, TANKS TO BE POWERWASHED & SANITIZED. CONTRACTOR TO TRANSPORT WASHDOWN WATER OFF-SITE FOR DISPOSAL.
6. FOLLOWING REMOVAL OF EQUIPMENT & TANK INTERNALS, TANKS WALLS & BUILDING FOUNDATIONS TO BE DEMOLISHED TO A MINIMUM OF 300mm BELOW FINISHED GRADE.
7. BREAK 100mm DIA. DRAINAGE HOLES IN TANKAGE AT APPROXIMATELY 3m SPACING.
8. FILL TANKAGE WITH 25mm DIA. CLEAR STONE TO A DEPTH OF APPROXIMATELY 300mm.
9. SELECT EXCAVATED MATERIAL RESULTING FROM THE CONSTRUCTION OF THE NEW WWTP TO BE STOCKPILED ON-SITE FOR USE DURING DEMOLITION & REMOVALS PROCESS (ABOVE CLEAR STONE). COMPACT TO 95% STD. TOPSOIL AND HYDROSEED SURFACES.
10. CONTRACTOR TO OBSERVE CONFINED SPACE PROTOCOL AS REQUIRED THROUGHOUT THE DEMOLITION & REMOVALS PROCESS.
11. EXISTING 200mm DIA. OUTFALL TO BE PLUGGED AT BOTH ENDS AND FILLED WITH FLOWABLE FILL CONCRETE (I.E. ABANDONED IN PLACE). APPROXIMATE LENGTH IS 310m.

NOT FOR
CONSTRUCTION

0	ISSUED FOR TENDER	MAY 20/22	DAT
No.	Description	Date	By

Revision or Issue

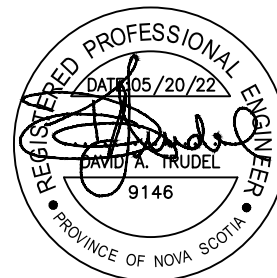


MUNICIPALITY OF EAST HANTS

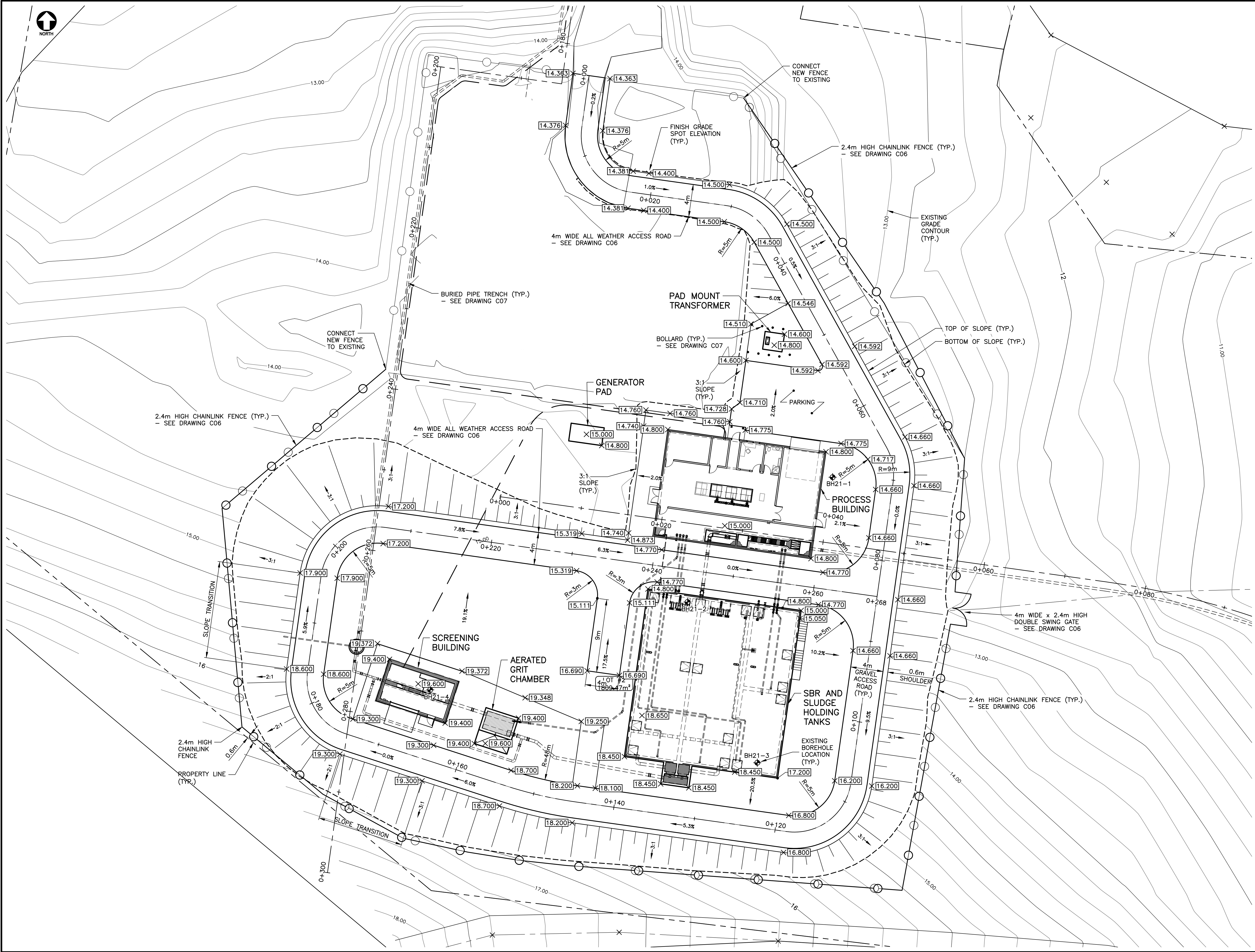
SHUBENACADIE WWTP
REPLACEMENT

CIVIL

EXISTING CONDITIONS,
REMOVALS & EROSION &
SEDIMENT CONTROL PLAN



CBCL No. 210814.01	Contract No. 210814
Date NOV 2021	Scale 1:200
Designed DAT	Drawn NHM
Checked MA	Approved DAT
Sheet No. 2	of 8
Drawing No. C01	



NOT FOR
CONSTRUCTION

0	ISSUED FOR TENDER	MAY 20/22	DAT
No.	Description	Date	By

Revision or Issue

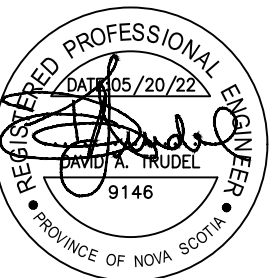


MUNICIPALITY OF EAST HANTS

SHUBENACADIE WWTP
REPLACEMENT

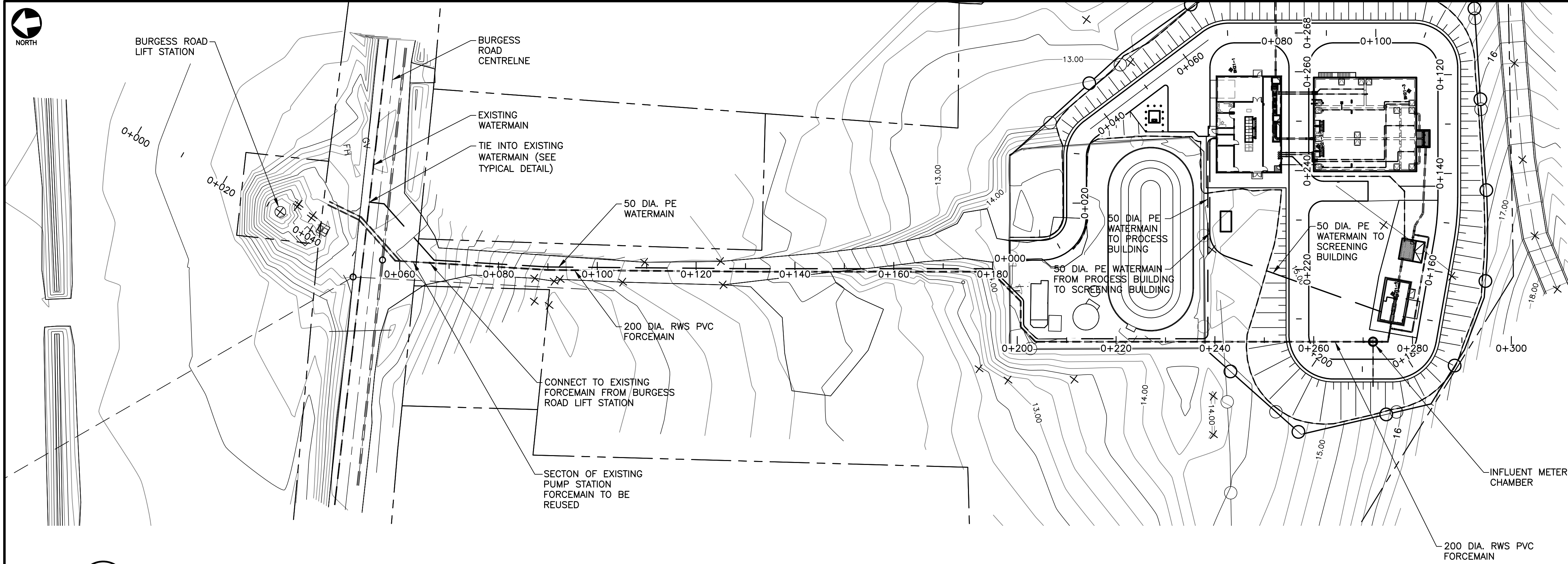
CIVIL

SITE GRADING PLAN

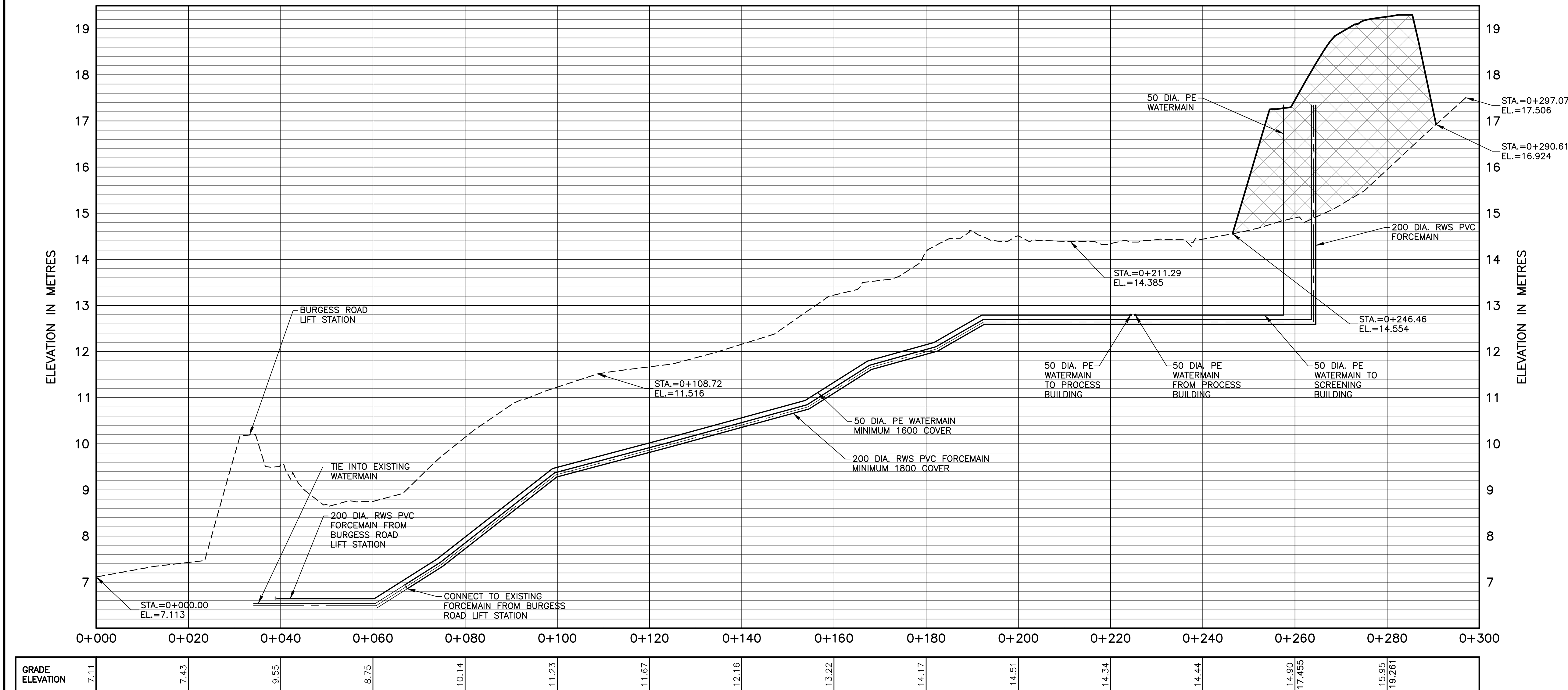


CBCL No 210814.01	Contract No 210814
Date NOV 2021	Scale 1:200
Designed DAT	Drawn NHM
Checked MA	Approved DAT
Sheet No 3	of 8

Drawing No
C02



1 PLAN— FORCEMAIN
GA1 1:500



PROFILE No. 1 — FORCEMAINS
STATION 0+000.00 TO 0+300.00

1 PROFILE— FORCEMAIN
GA1 H. 1:500 V. 1:50

GRADE ELEVATION	7.11	7.43	9.55	8.75	10.14	11.23	11.67	12.16	13.22	14.17	14.51	14.34	14.44	14.90	17.455	15.95	19.261
-----------------	------	------	------	------	-------	-------	-------	-------	-------	-------	-------	-------	-------	-------	--------	-------	--------

NOT FOR
CONSTRUCTION

No.	Description	Date	By
0	ISSUED FOR TENDER	MAY 20/22	DAT

Revision or Issue

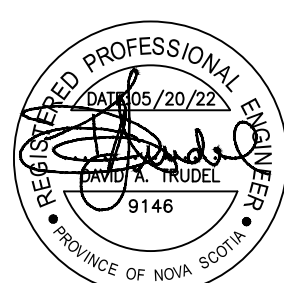


MUNICIPALITY OF EAST HANTS

SHUBENACADIE WWTP
REPLACEMENT

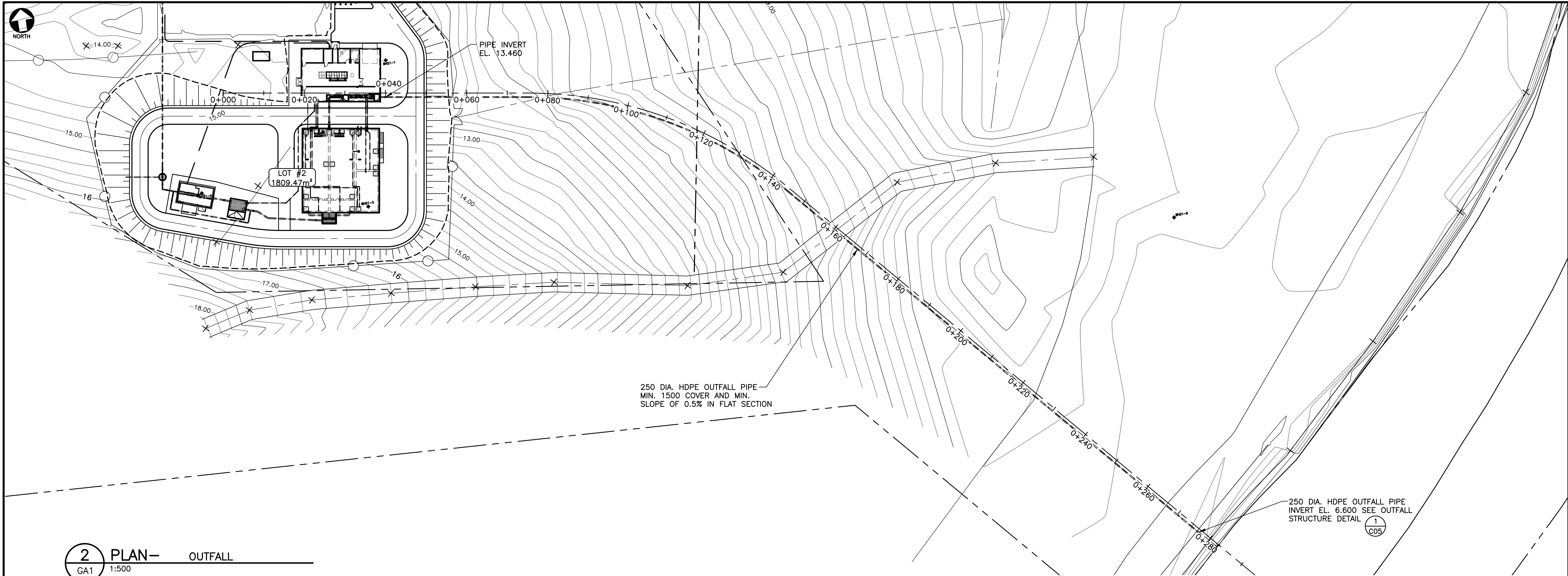
CIVIL

PLAN AND PROFILE NO. 1

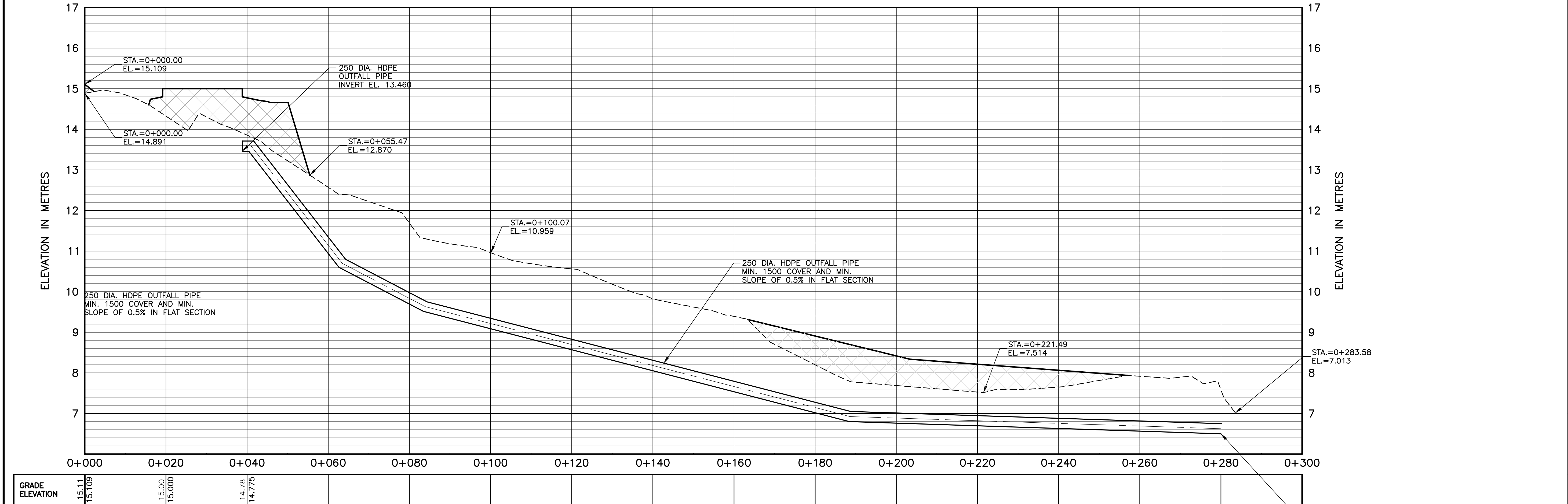


CBCL No. 210814.01	Contract No. 210814
Date NOV 2021	Scale 1:500
Designed DAT	Drawn MAA
Checked MA	Approved DAT
Sheet No. 4	of 8
Drawing No.	

C03



2 PLAN— OUTFALL
GA1 1:500



2 PROFILE— OUTFALL
GA1 H. 1:500 V. 1:50

PROFILE No. 2 — OUTFALL
STATION 0+000.00 TO 0+300.00

NOT FOR
CONSTRUCTION

0	ISSUED FOR TENDER	MAY 20/22	DAT
No.	Description	Date	By

Revision or Issue

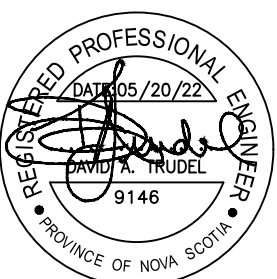
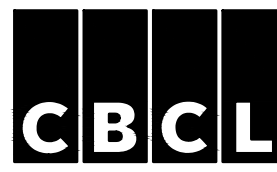


MUNICIPALITY OF EAST HANTS

SHUBENACADIE WWTP
REPLACEMENT

CIVIL

PLAN AND PROFILE NO. 2



CBCL No. 210814.01	Contract No. 210814
Date NOV 2021	Scale 1:500
Designed DAT	Drawn MAA
Checked MA	Approved DAT
Sheet No. 5	of 8
Drawing No.	

C04

- NOTES:
- DRAWINGS IN GENERAL ARE TO SCALE BUT FIGURED DIMENSIONS TAKE PRECEDENCE. THE CONTRACTOR ASSUMES FULL RESPONSIBILITY FOR THE ACCURACY OF INFORMATION SCALED FROM THE DRAWINGS.
 - ALL DIMENSIONS USE METRIC UNITS. DIMENSIONS SHOWN IN MILLIMETERS AND POINT ELEVATIONS AS METERS (UNLESS NOTED OTHERWISE).
 - SEE CIVIL DRAWING GA1 FOR GENERAL ARRANGEMENT SITE PLAN.
 - SEE PROCESS LAYOUT DRAWING P11 FOR GENERAL ARRANGEMENT AND SITE YARD PIPING PLAN.

NOT FOR
CONSTRUCTION

0	ISSUED FOR TENDER	MAY 20/22	DAT
No.	Description	Date	By

Revision or Issue



MUNICIPALITY OF EAST HANTS

SHUBENACADIE WWTP
REPLACEMENT

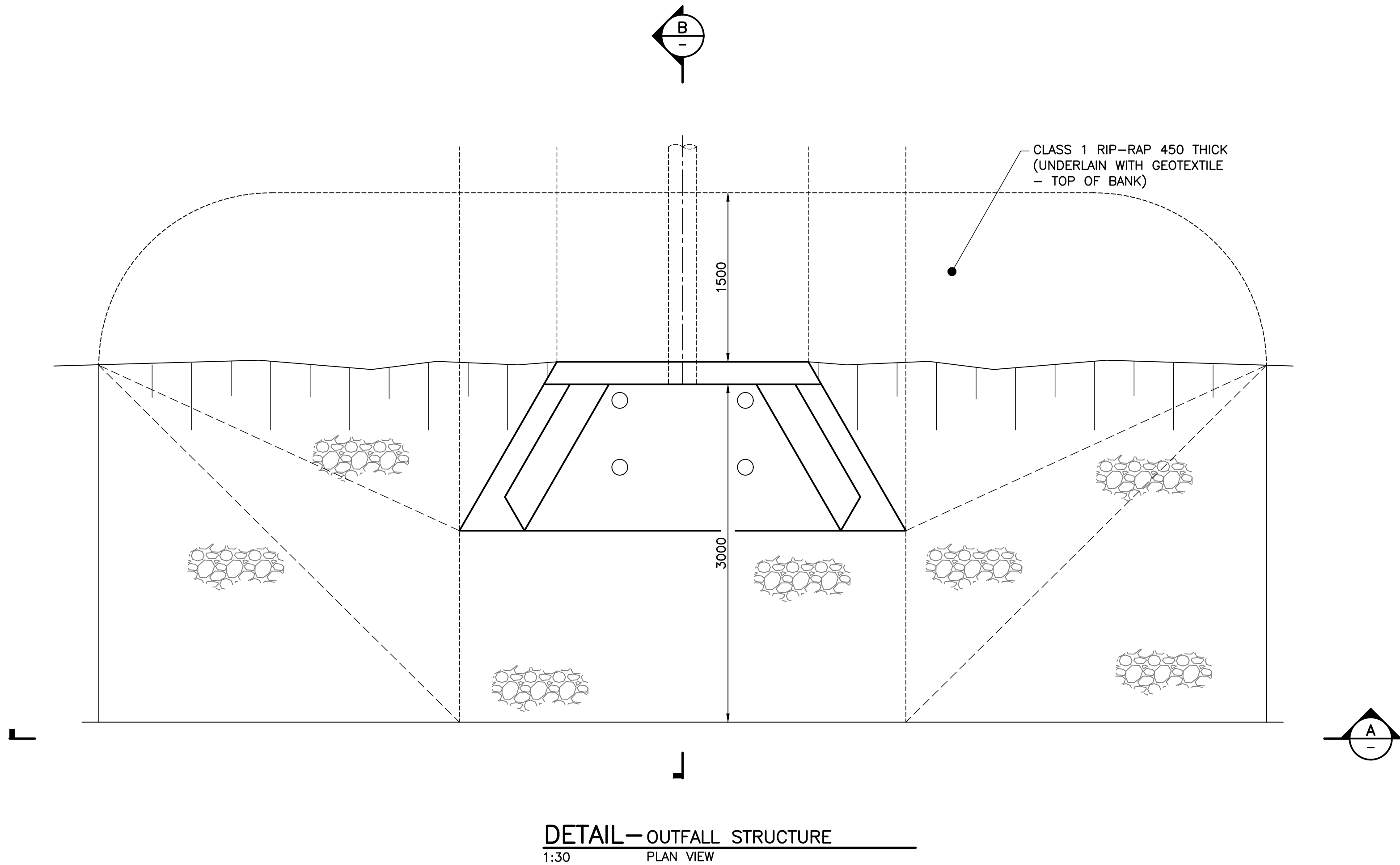
CIVIL

OUTFALL STRUCTURE PLAN
AND SECTIONS

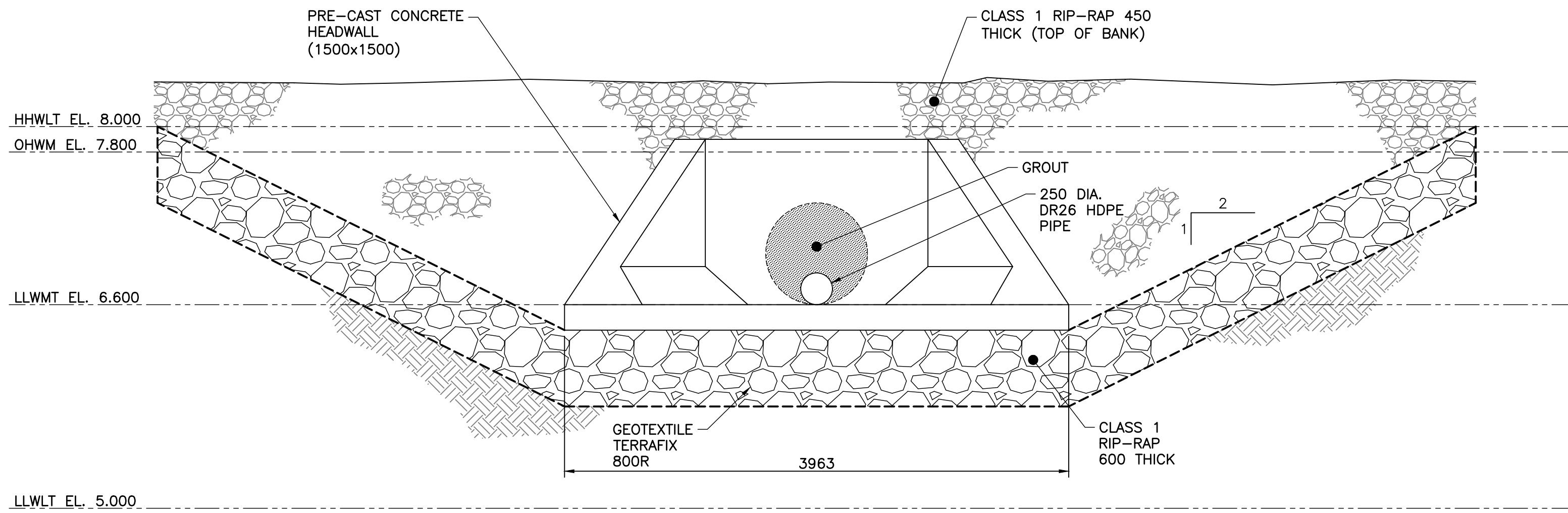


CBCL No. 210814.01	Contract No. 210814
Date NO 2021	Scale AS NOTED
Designed DAT	Drawn MAA
Checked MA	Approved DAT
Sheet No. 9146	Drawing No. 6 of 8

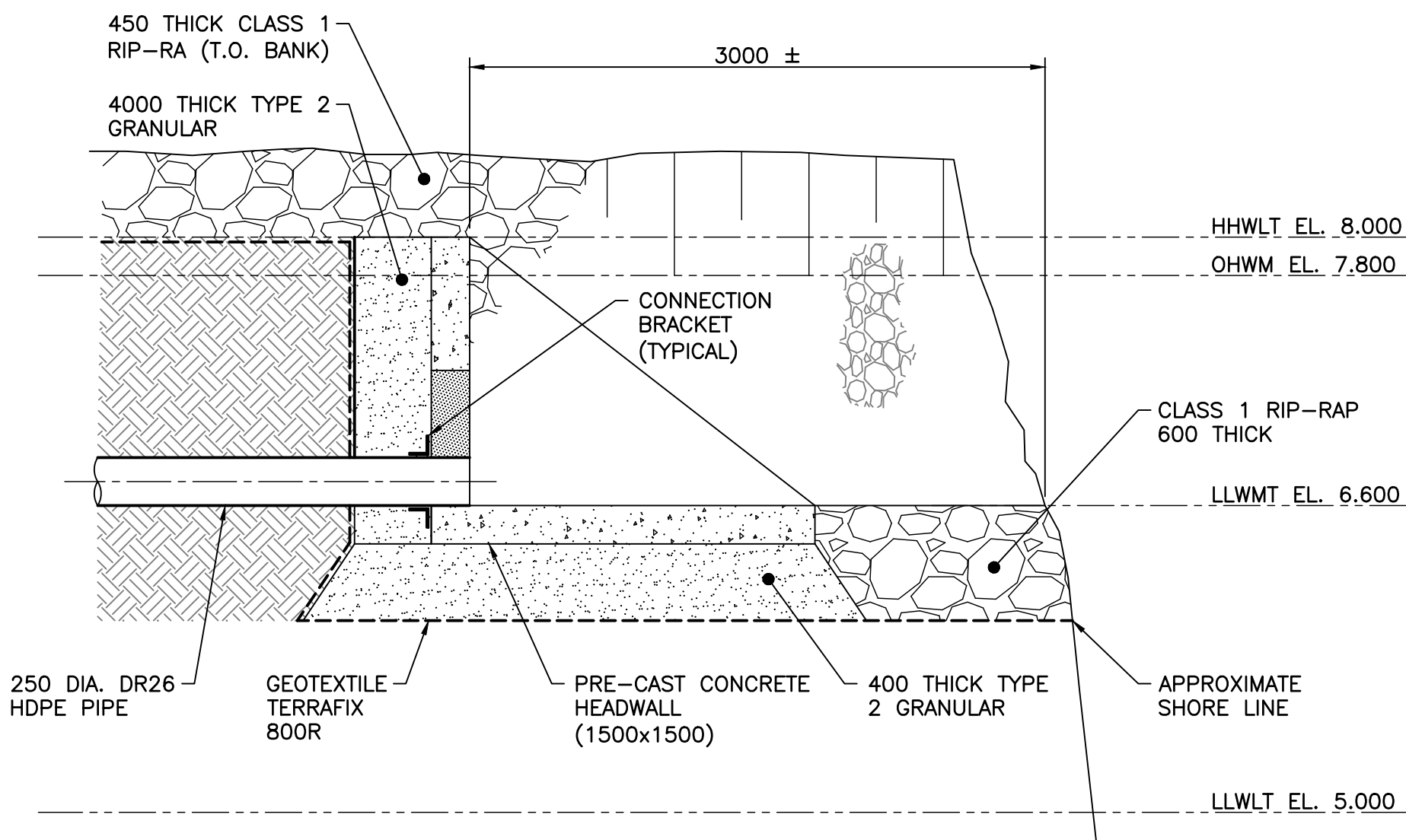
C05



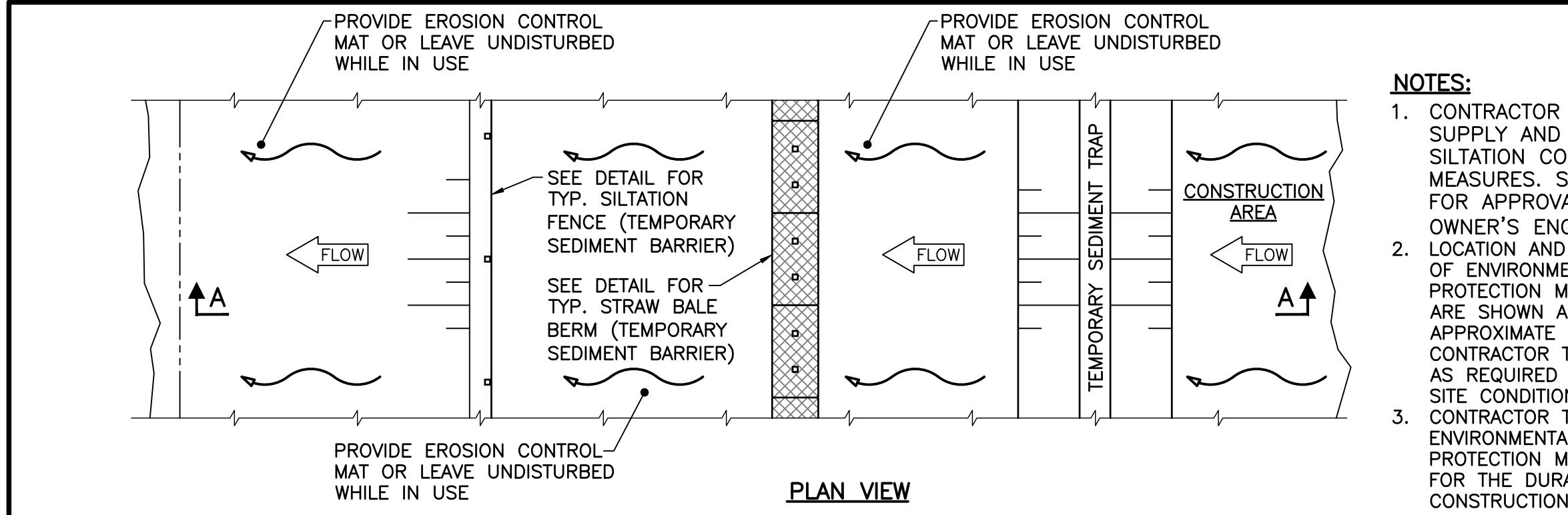
DETAIL— OUTFALL STRUCTURE
1:30 PLAN VIEW



A SECTION— OUTFALL STRUCTURE
1:30



B SECTION— OUTFALL STRUCTURE
1:30

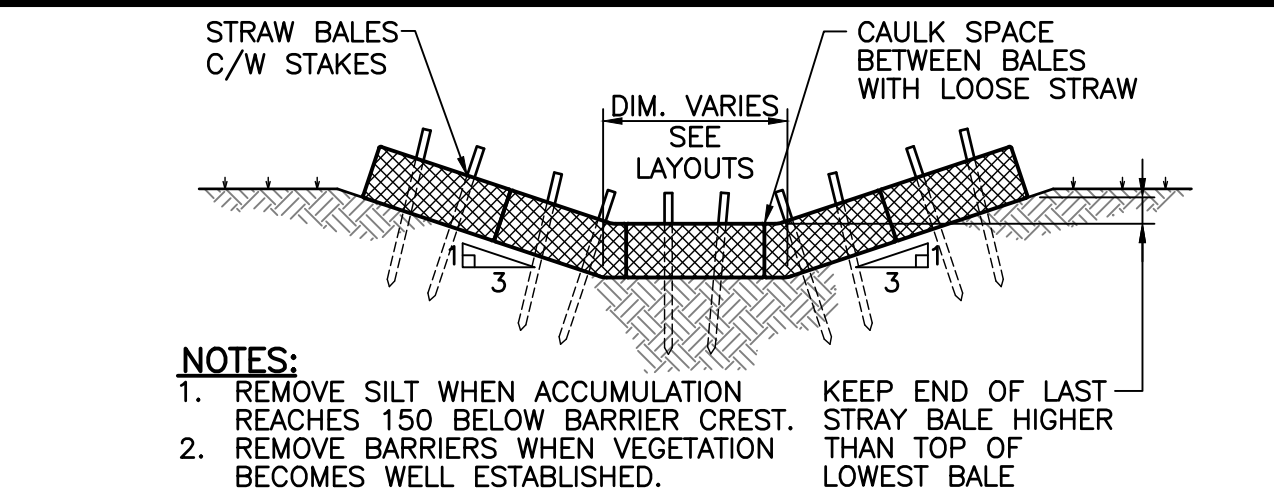


DETAIL—SEDIMENT CONTROL PLAN

1:50
TEMPORARY SEDIMENT TRAP,
STRAW BALE BERM AND SILTATION
FENCE SEDIMENT BARRIERS

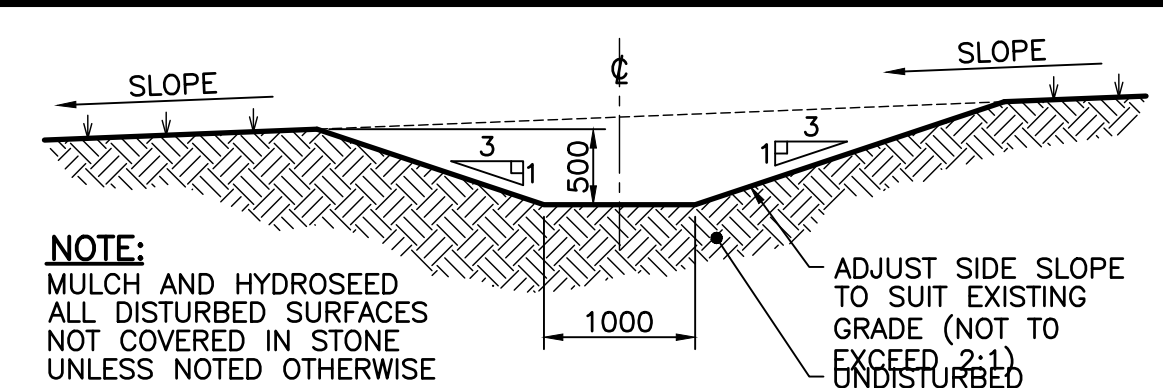
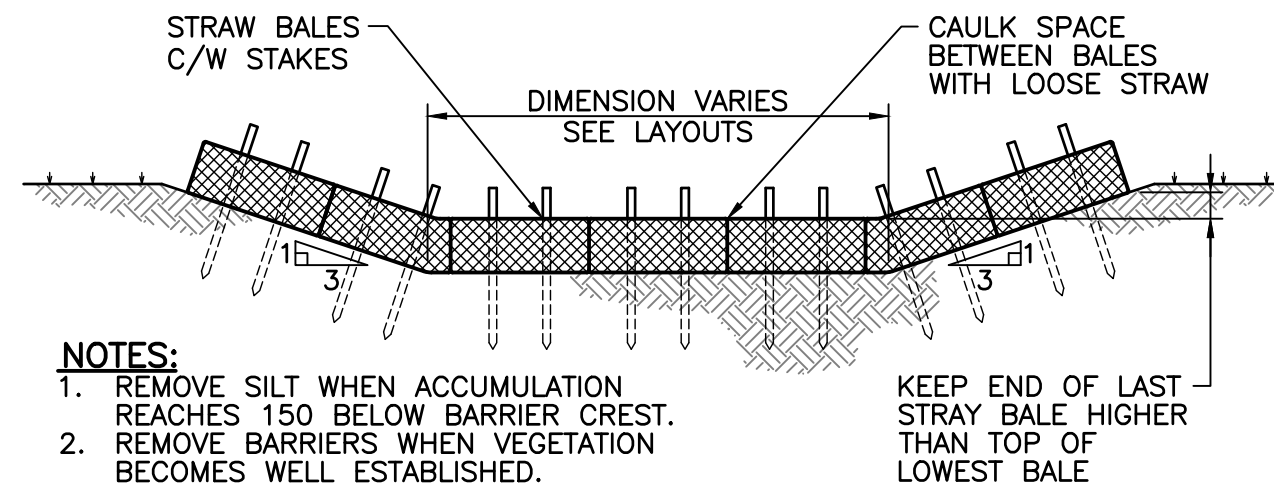
NOTES:

1. CONTRACTOR TO DESIGN, SUPPLY AND IMPLEMENT SILTATION CONTROL MEASURES. SUBMIT PLAN FOR APPROVAL TO OWNER'S ENGINEER.
2. LOCATION AND DIMENSIONS OF ENVIRONMENTAL PROTECTION MEASURES ARE SHOWN AS APPROXIMATE ONLY. CONTRACTOR TO MODIFY AS REQUIRED TO SUIT ON SITE CONDITIONS.
3. CONTRACTOR TO MAINTAIN ENVIRONMENTAL PROTECTION MEASURES FOR THE DURATION OF CONSTRUCTION.



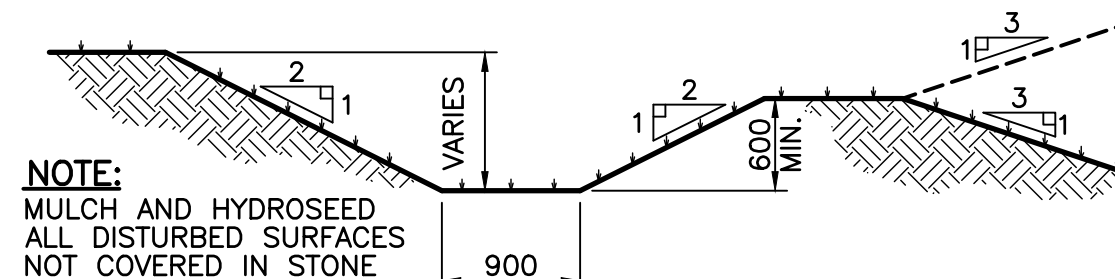
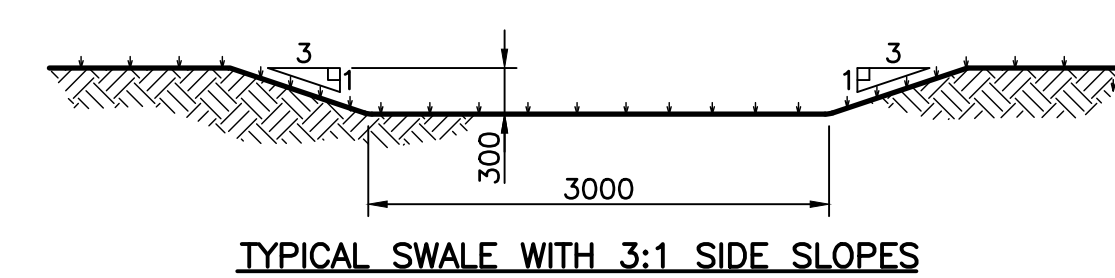
DETAIL—SEDIMENT BARRIER IN SWALE

N.T.S.
TEMPORARY SEDIMENT BARRIER
STRAW BALES IN SWALE WITH
3:1 SIDE SLOPE



DETAIL—TYPICAL INTERCEPTOR DITCH

N.T.S.

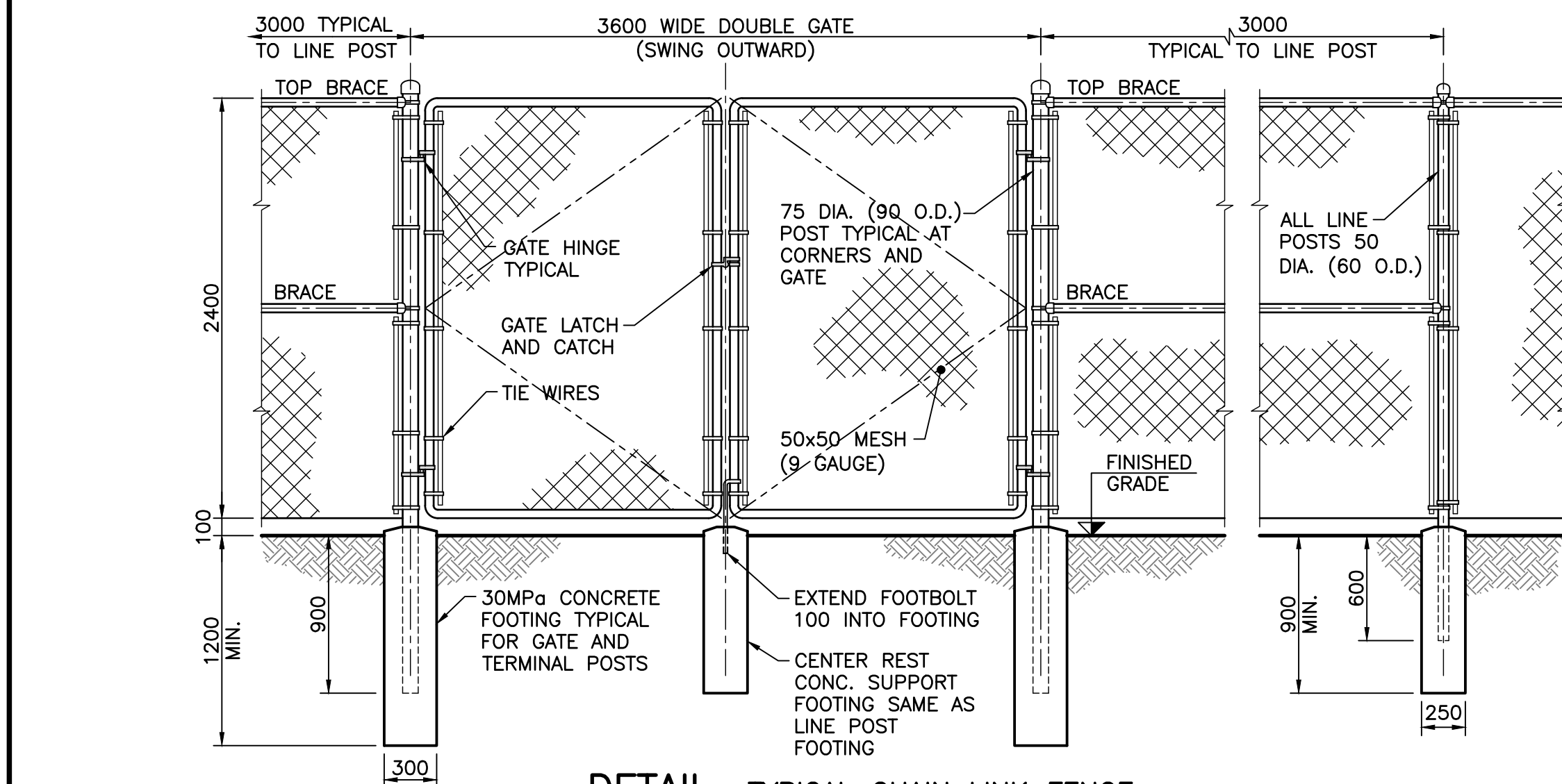


DETAIL—DRAINAGE DITCH AND SWALE

N.T.S.

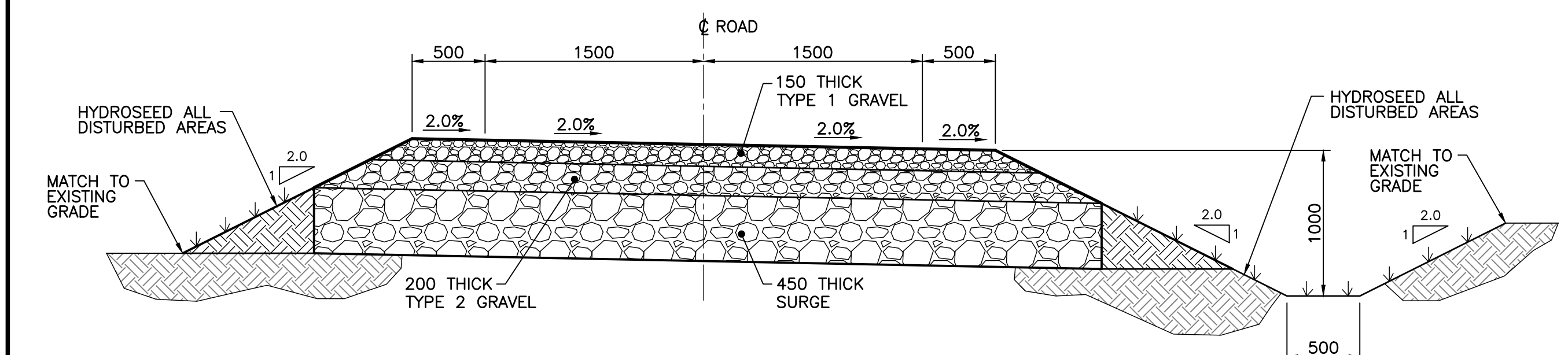
NOTES:

1. DRAWINGS IN GENERAL ARE TO SCALE BUT FIGURED DIMENSIONS TAKE PRECEDENCE. THE CONTRACTOR ASSUMES FULL RESPONSIBILITY FOR THE ACCURACY OF INFORMATION SCALED FROM THE DRAWINGS.
2. ALL DIMENSIONS USE METRIC UNITS. DIMENSIONS SHOWN IN MILLIMETERS AND POINT ELEVATIONS AS METERS (UNLESS NOTED OTHERWISE).
3. SEE CIVIL DRAWING G01 FOR GENERAL ARRANGEMENT SITE PLAN.
4. SEE PROCESS LAYOUT DRAWING P11 FOR GENERAL ARRANGEMENT AND SITE YARD PIPING PLAN.



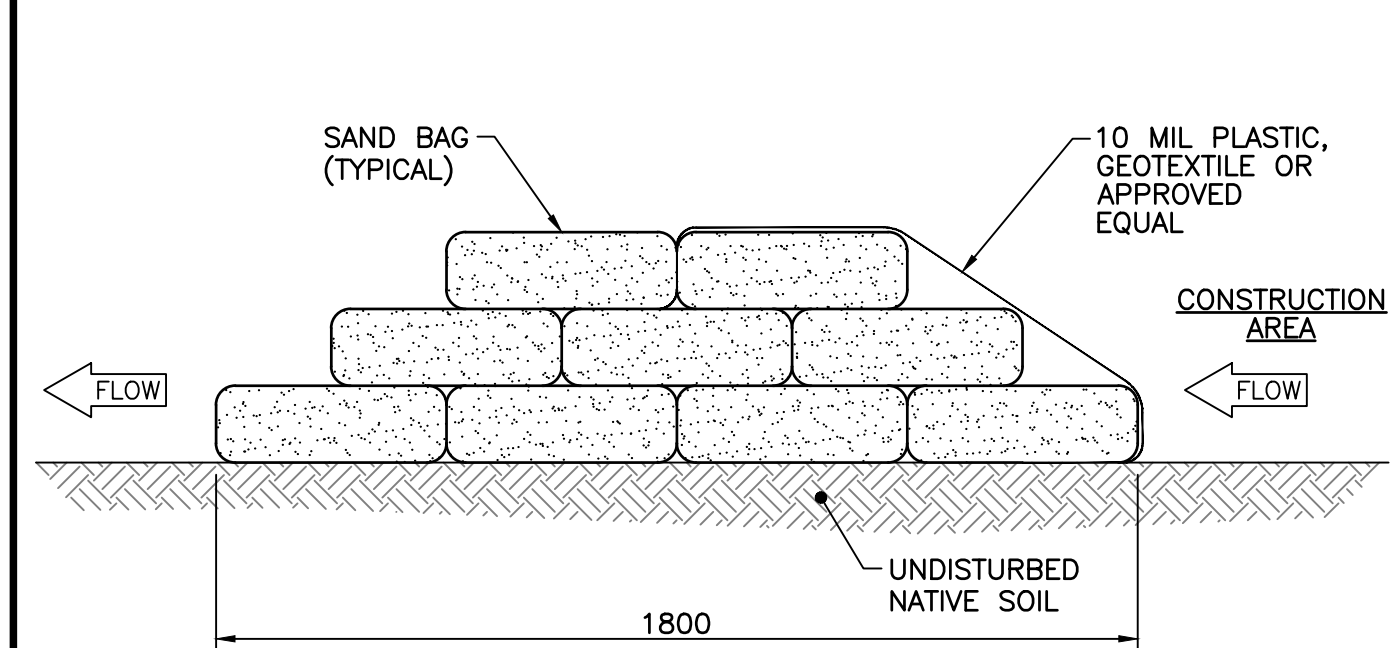
DETAIL—TYPICAL CHAIN LINK FENCE

1:30
2400 HIGH FENCE WITH 3600 WIDE
DOUBLE GATE (OUTWARD SWING)



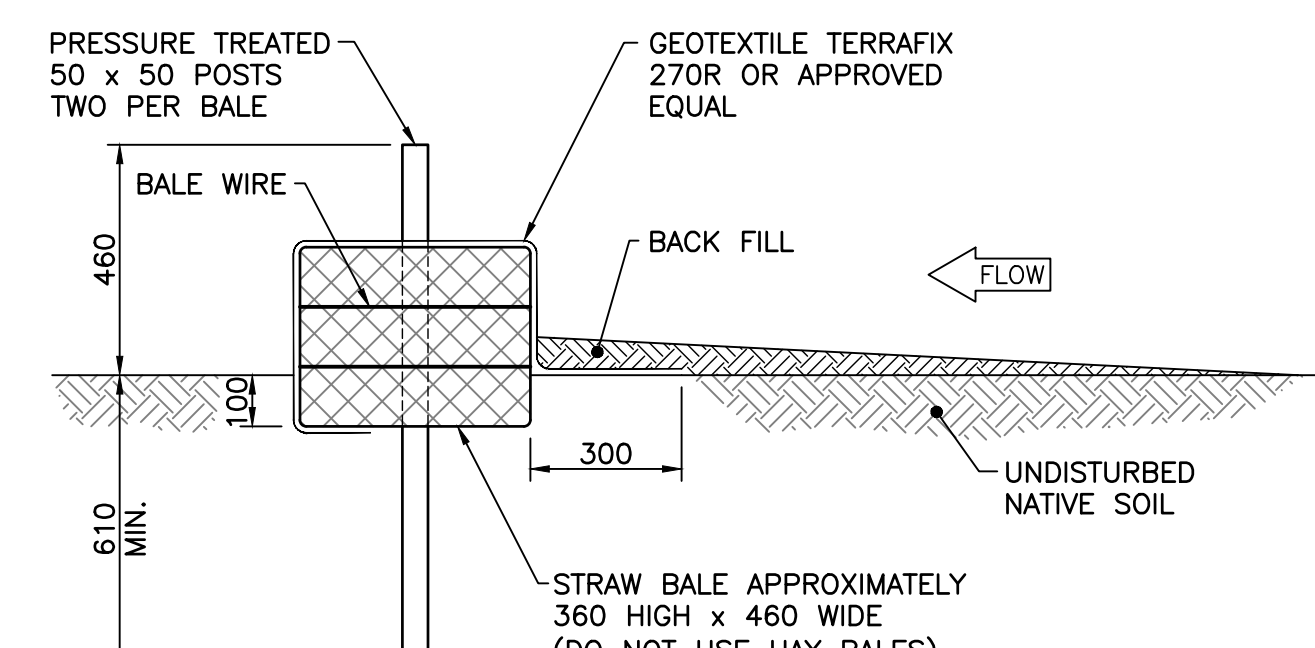
DETAIL—TYPICAL ACCESS ROAD

1:30
ALL WEATHER GRAVEL ROAD



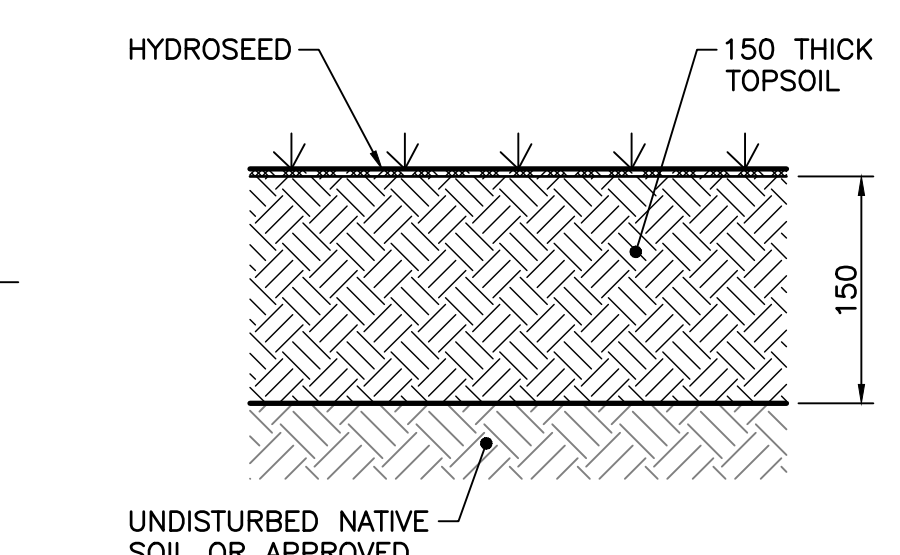
DETAIL—TYPICAL SAND BAG BERM

N.T.S.
TEMPORARY SEDIMENT BARRIER



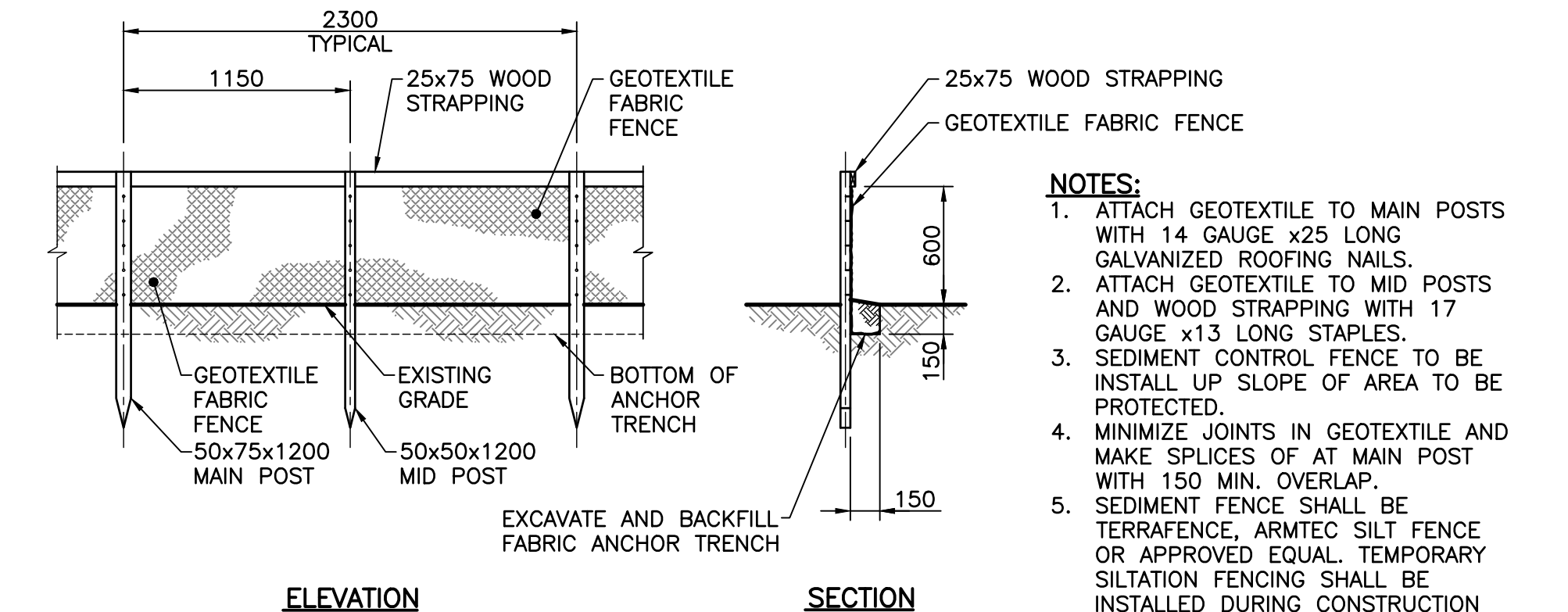
DETAIL—TEMPORARY SEDIMENT BARRIER

N.T.S.
SECTION OF STRAW BALE BERM
COVERED WITH GEOTEXTILE



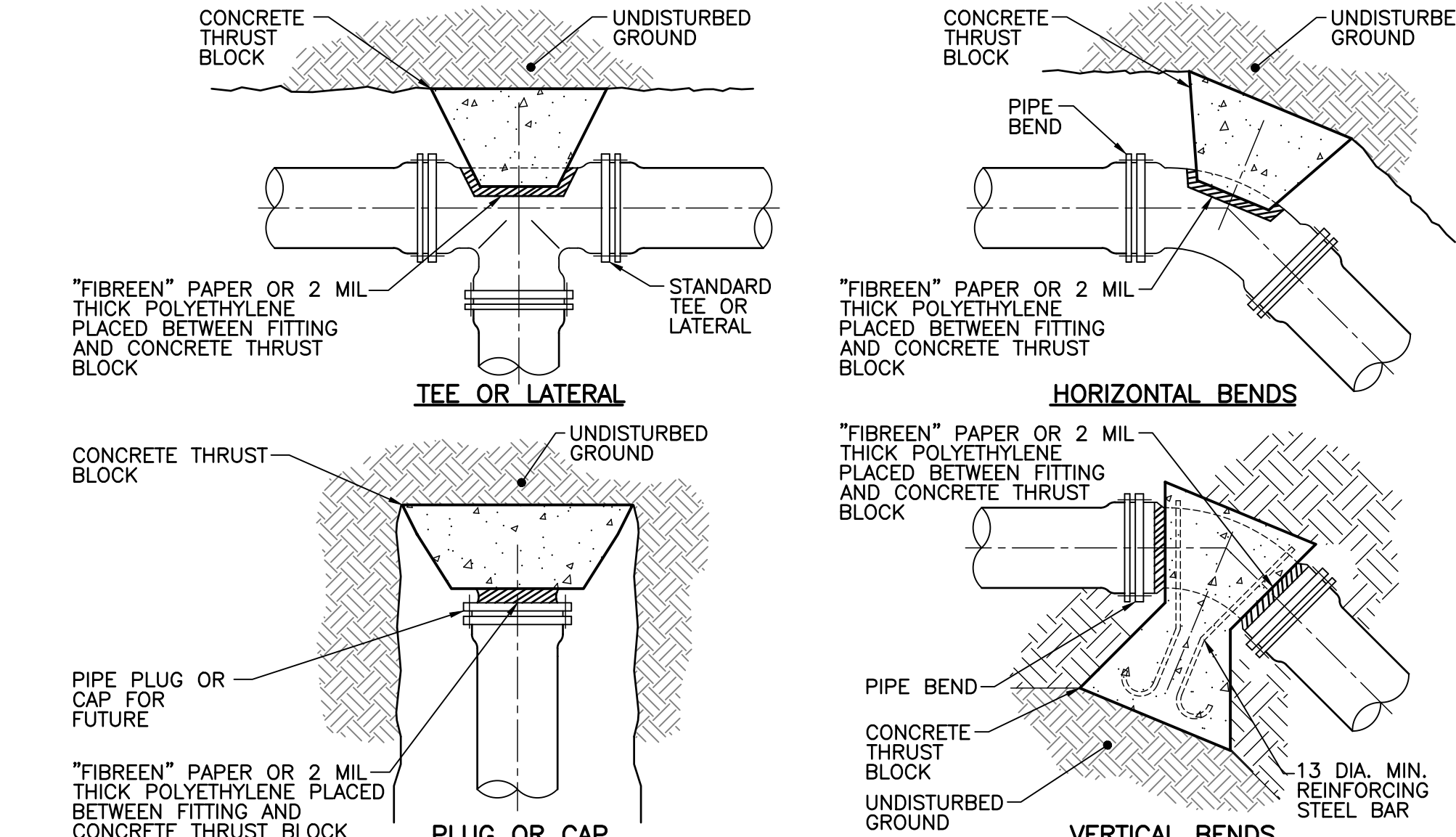
DETAIL—TOPSOIL AND HYDROSEED

N.T.S.



DETAIL—TYPICAL SILTATION FENCE

1:30
TEMPORARY SEDIMENT BARRIER



DETAIL—TYP. CONCRETE THRUST BLOCKS

N.T.S.

MINIMUM CONTACT AREAS FOR CONCRETE THRUST BLOCKS (M ²)							MINIMUM DISTANCE FROM FITTING TO UNDISTURBED GROUND
NOMINAL PIPE SIZE	PIPE CAP OR PLUG	PIPE TEE	90° PIPE BEND	45° PIPE BEND	22.5° PIPE BEND	11.1/4° PIPE BEND	
100 (4")	0.25	0.25	0.32	0.20	0.16	0.16	450 MIN.
150 (6")	0.48	0.48	0.64	0.40	0.24	0.16	450 MIN.
200 (8")	0.80	0.80	1.12	0.64	0.32	0.16	450 MIN.
250 (10")	1.28	1.28	1.76	0.96	0.48	0.24	600 MIN.
300 (12")	1.76	1.76	2.56	1.44	0.72	0.40	750 MIN.

VERTICAL THRUST BLOCKS THRUST COMPENSATED BY CONCRETE MASS (M ²)			
NOMINAL PIPE SIZE	45° PIPE BEND	22.5° PIPE BEND	11.1/4° PIPE BEND
100 (4")	0.40	0.20	0.20
150 (6")	0.80	0.40	0.40
200 (8")	1.40	0.70	0.70
250 (10")	2.10	1.10	1.10
300 (12")	3.00	1.50	1.50

NOT FOR CONSTRUCTION

No.	Description	Date	By
0	ISSUED FOR TENDER	MAY 20/22	DAT

Revision or Issue

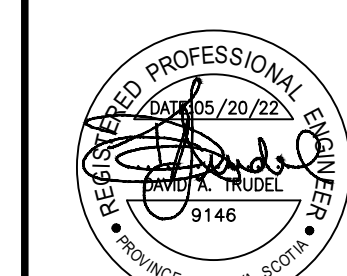


MUNICIPALITY OF EAST HANTS

SHUBENACADIE WWTP REPLACEMENT

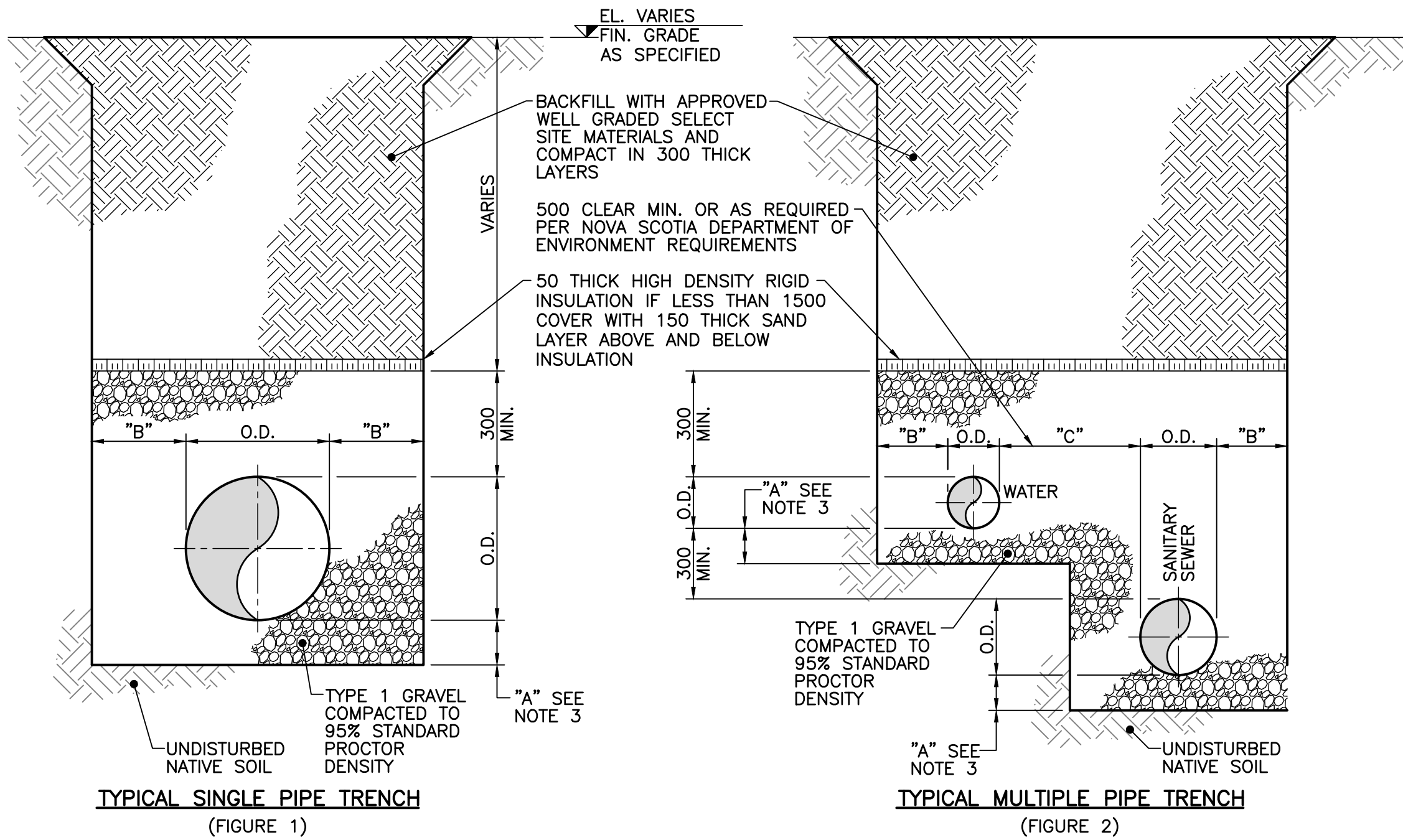
CIVIL

MISCELLANEOUS DETAILS
SHEET 1 OF 2



Client No 210814-01	Contract No 210814
Date NOV 2021	Scale AS NOTED
Designed DAT	Drawn MAA
Checked MA	Approved DAT
Sheet No 7	of 8

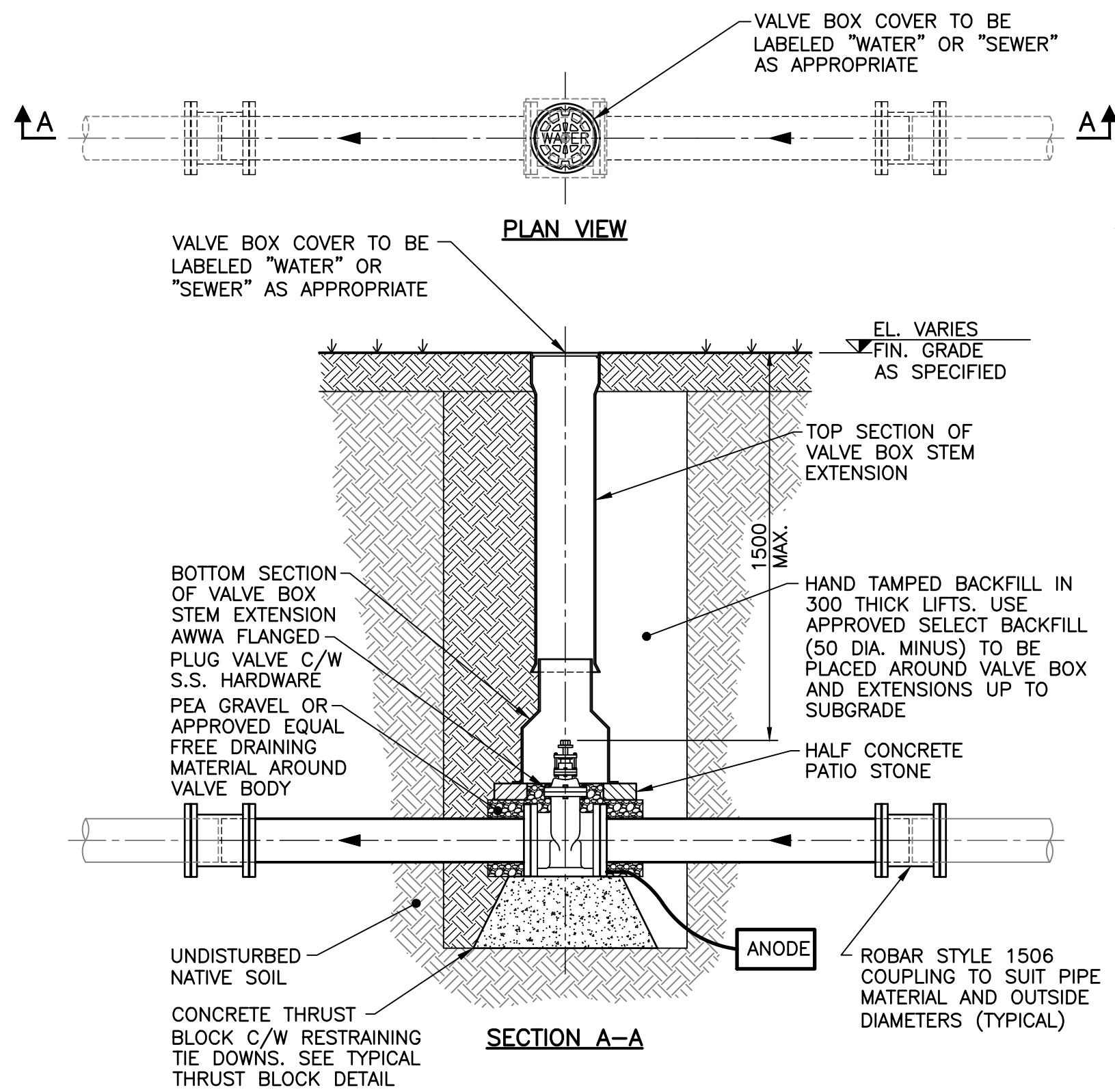
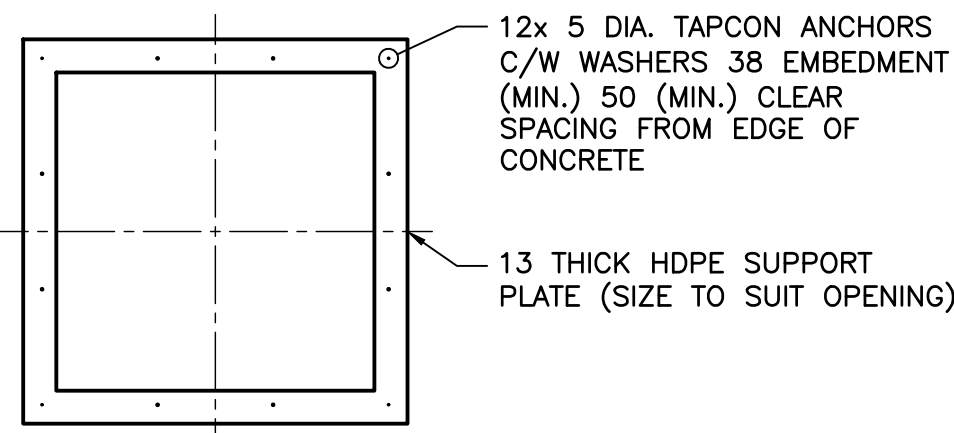
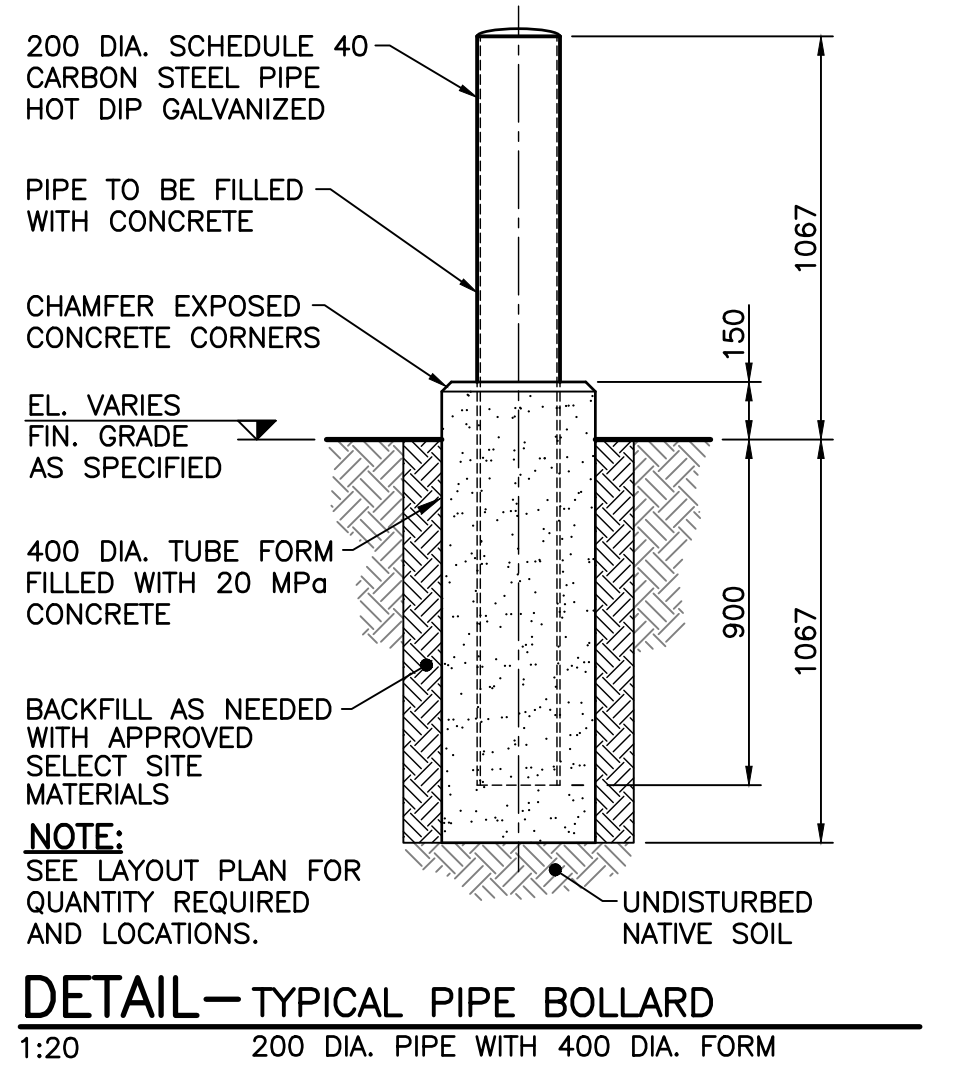
C06



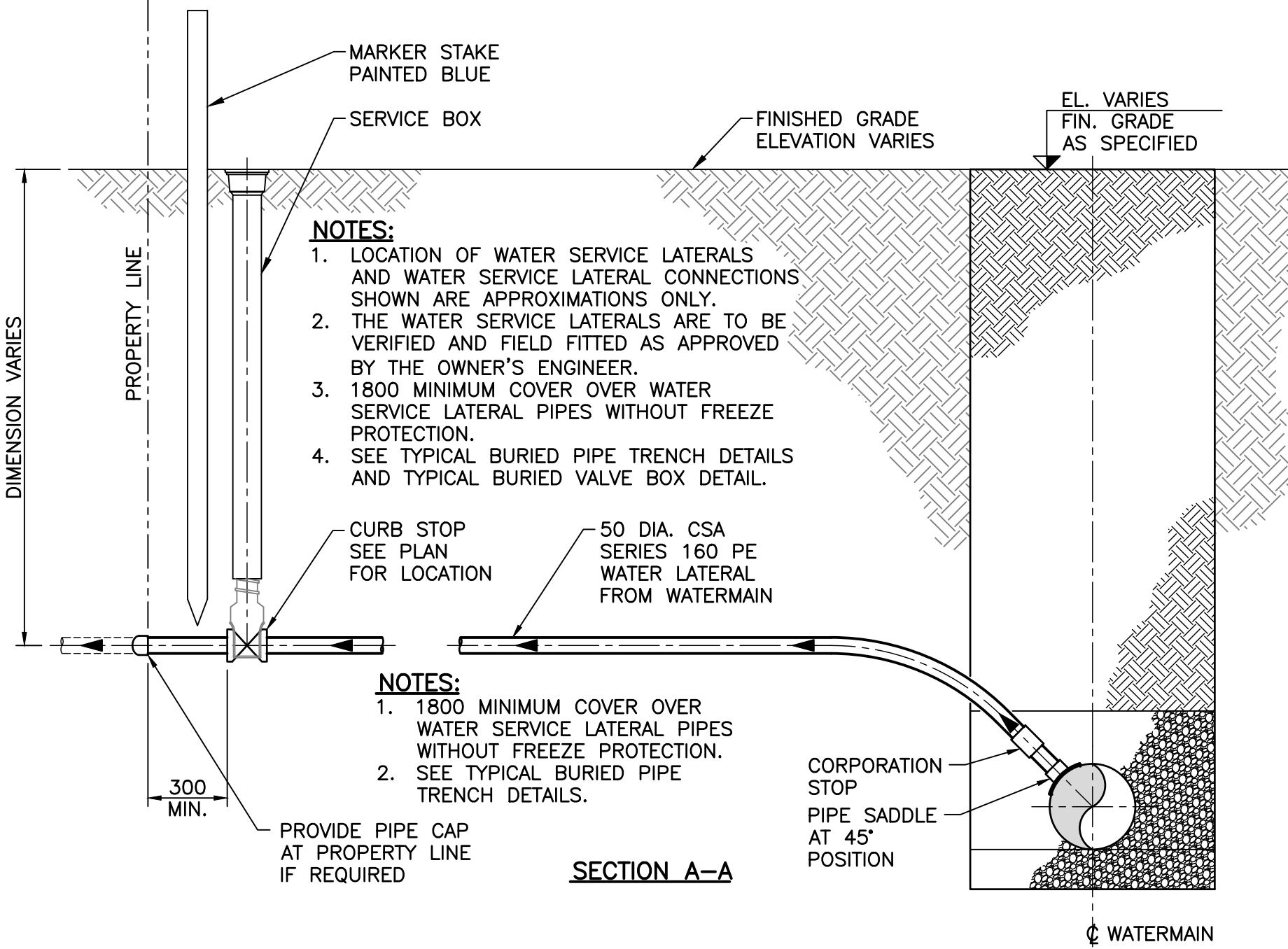
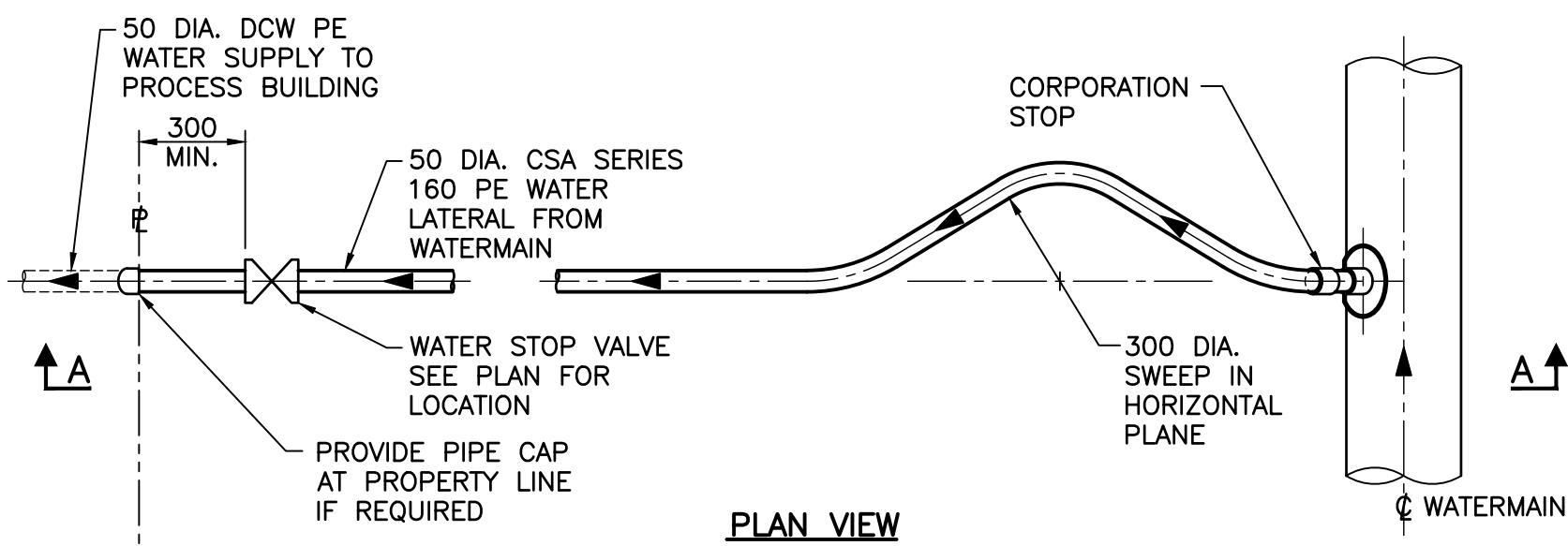
TYPICAL TRENCH SCHEDULE FOR BURIED PIPES			
NOMINAL PIPE DIAMETER	"A" MIN.	"B"	"C"
UP TO 375	150	300	500
376 TO 500	150	300	600
501 TO 750	150	400	600
751 TO 1200	NOTE 4	400	750
1201 TO 1600	NOTE 4	500	800

- TRENCH NOTES:**
- DIMENSION "C" ARE GOVERNED BY THE LARGER ADJACENT PIPE DIAMETER.
 - SIDES OF TRENCHES SHALL BE TO THE REQUIREMENTS OF THE DEPARTMENT OF LABOUR.
 - DIMENSION "A" EQUALS 25% OF THE NOMINAL PIPE DIAMETER OR 150 WHICHEVER IS GREATER.
 - SEE PLAN AND PROFILES FOR LOCATION AND ACTUAL ELEVATIONS OF ALL PIPES.
 - MINIMUM GRAVEL COVER OVER SANITARY SEWERS IS TO BE 300. REFER TO SPECIFICATIONS FOR WATERMAIN BEDDING REQUIREMENTS.

- NOTES:**
- THE CONTRACTOR IS TO CONFIRM THE LOCATION AND TYPE OF EXISTING UTILITIES WITH THE UTILITY OWNER PRIOR TO CONSTRUCTION.
 - THE CONTRACTOR SHALL NOTIFY OWNER TWO WEEKS PRIOR TO STARTING CONSTRUCTION AND IS TO COORDINATE INSTALLATION WITH OWNER'S INSPECTORS.
 - SIDE SLOPES OF TRENCH TO BE GOVERNED BY THE NOVA SCOTIA OCCUPATIONAL SAFETY ACT OR THE DEPARTMENT OF LABOR WHICHEVER IS MORE STRINGENT.

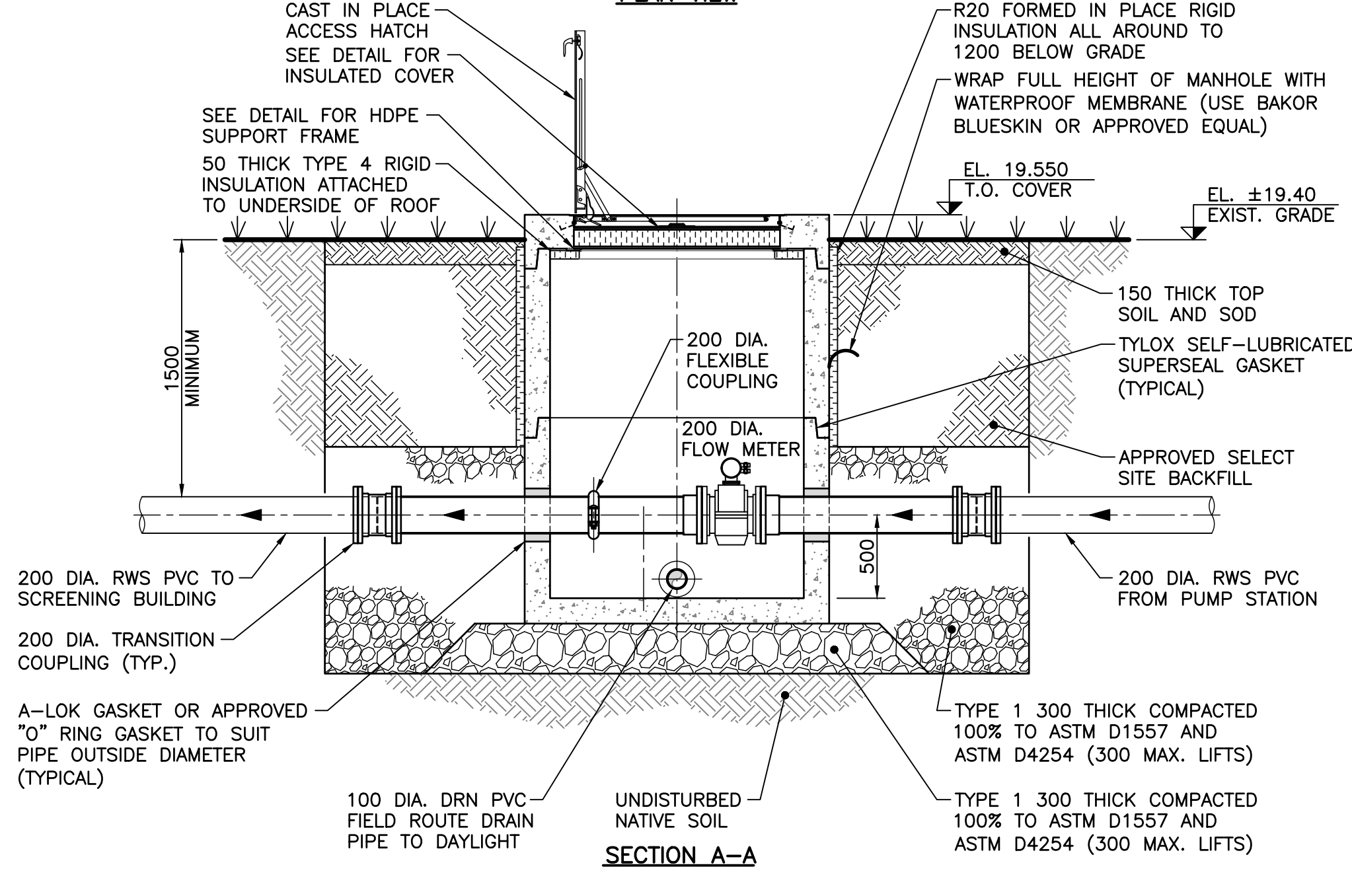
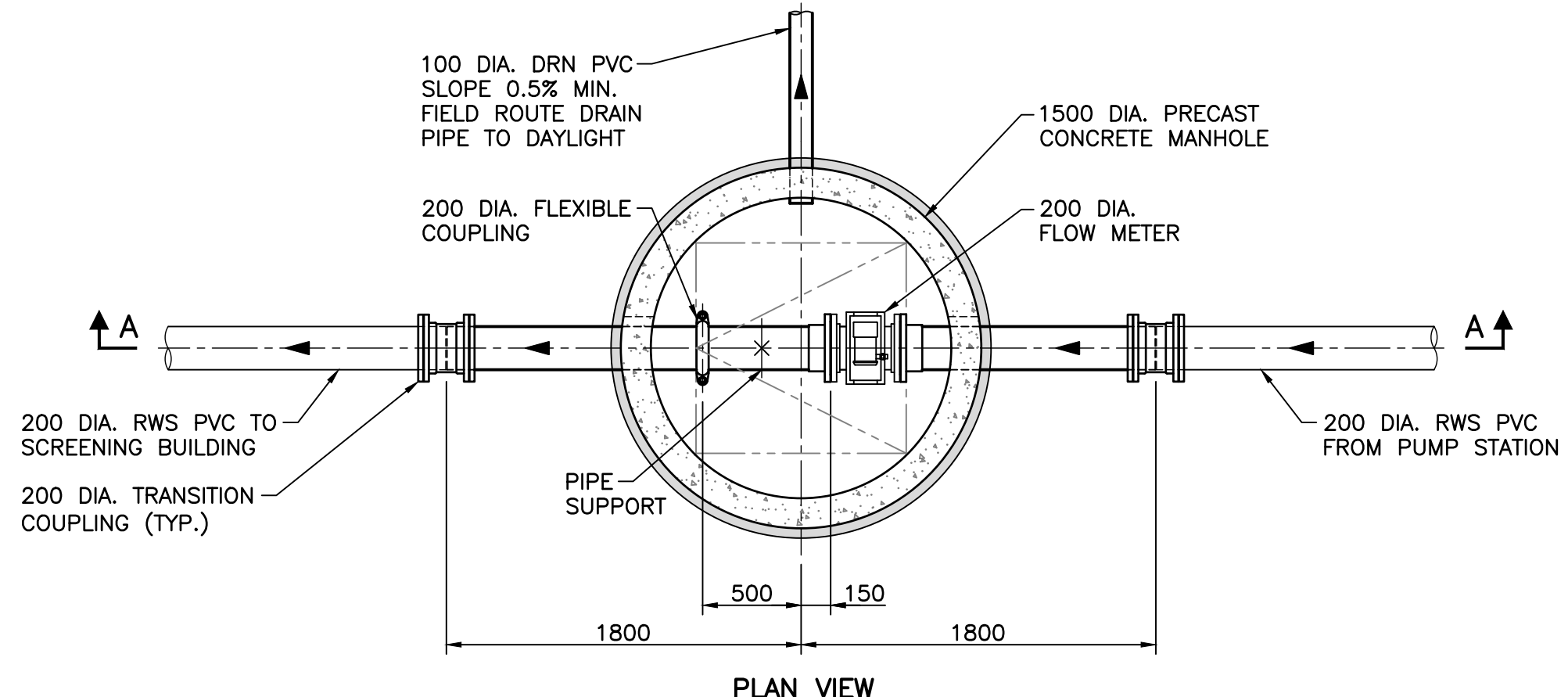
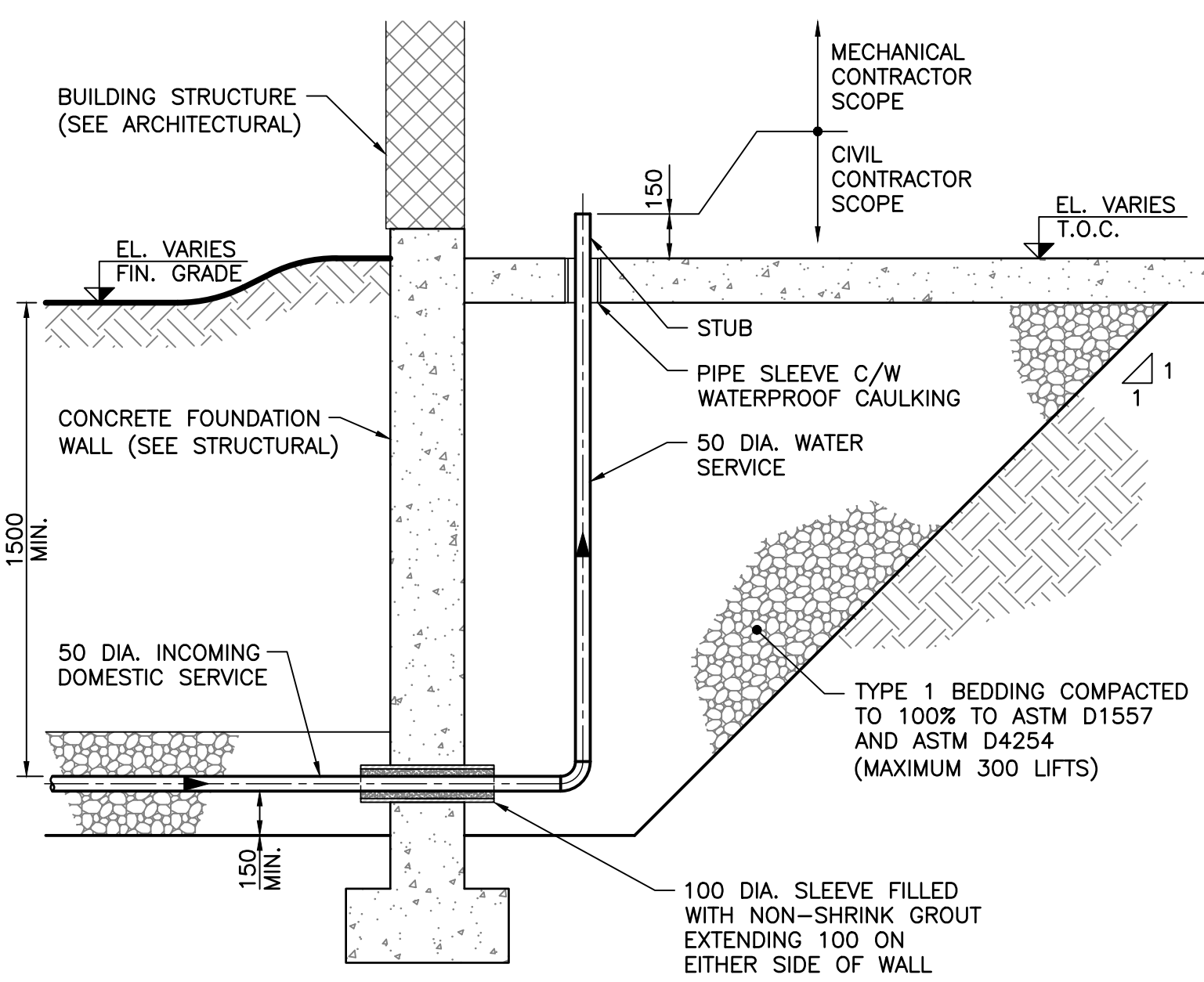
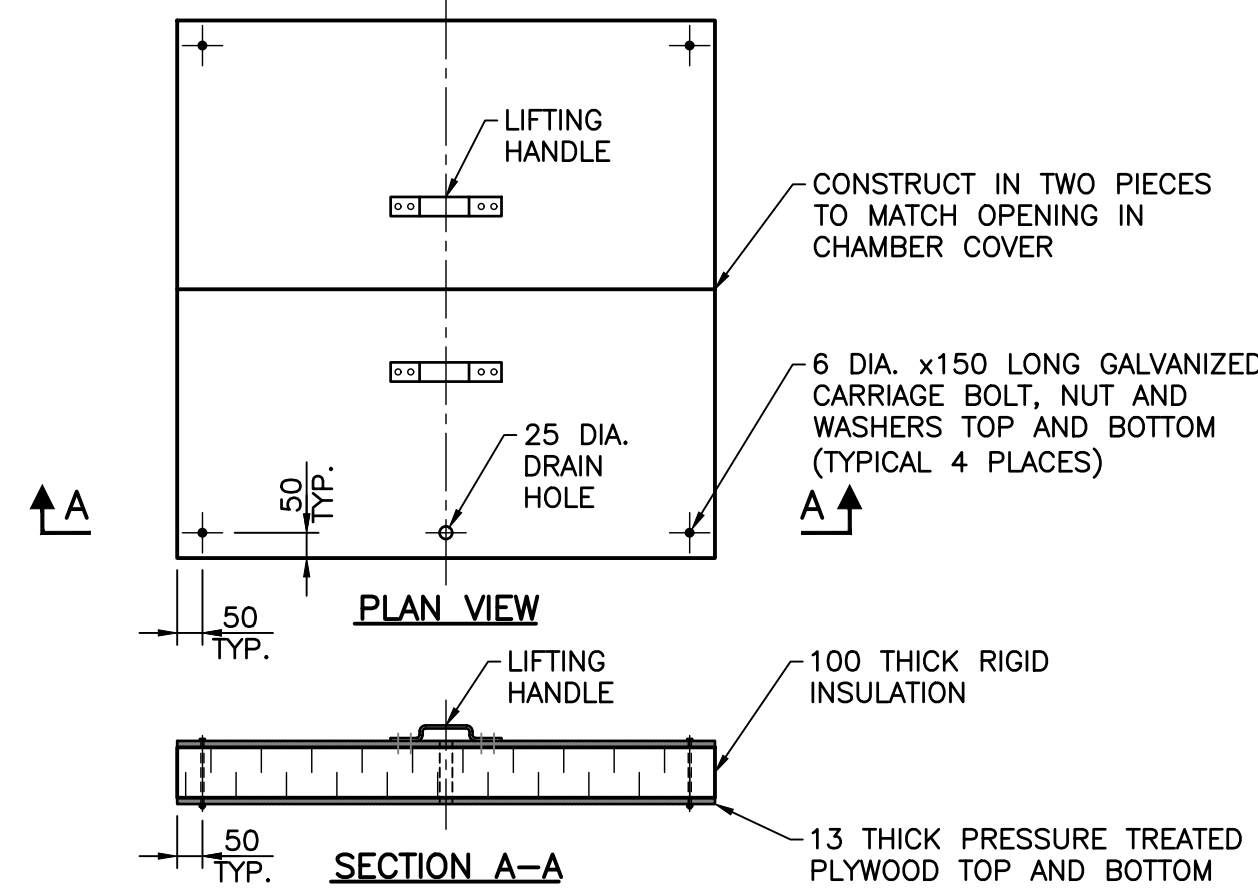


- BURIED VALVE BOX NOTES:**
- ONLY MANUFACTURED VALVE BOX EXTENSIONS SHALL BE ALLOWED.
 - VALVE OPERATING NUT MUST BE EXTENDED SO THAT THE DEPTH IS NO GREATER THAN 1500 FROM THE SURFACE USING A MANUFACTURER APPROVED EXTENSION KIT.
 - PRECAST CONCRETE ENCASEMENT IS ALLOWED OUTSIDE OF PAVED AREAS.
 - ANODE TO BE ZINC 24-48 TYPE. CONNECTION TO VALVE BY DOUBLE NUTTING ON ACCESSIBLE STUD.
 - SEPARATE ANODE AND VALVE/SERVICE USING 50 THICK RIGID INSULATION IF ANODE IS INSTALLED WITHIN 600 OF VALVE/SERVICE.
 - WRAP ANODE WIRE AROUND A BOLT SEVERAL TIMES AND WRAP WITH NEOPRENE TAPE WHEN ANODES ARE ATTACHED TO MECHANICAL JOINT VALVES.
 - SECURE WIRE TO BOLT BY USING A SECOND NUT. IF ANODE WIRE CANNOT BE ATTACHED AS INDICATED, ANODE WIRE MUST BE ATTACHED TO VALVE WITH SLU-70 WIRE CONNECTOR OR CADWELD. APPLY BITUMINOUS COATING TO SLU-70 WIRE CONNECTOR OR CADWELD.
 - GROUNDING CLAMP TO BE #3110-U FOR 19 DIA. TO 25 DIA. SERVICES OR #3903BU FOR 32 DIA. TO 50 DIA. SERVICES.
 - VALVE BOX SHOULD NOT CONTACT PIPE OR VALVE.



DETAIL—WATER SERVICE LATERAL

1:20 TYPICAL 50 DIA. WATER SERVICE LATERAL AND CONNECTION TO WATERMAIN



DETAIL—INFLUENT METER CHAMBER

1:30

- NOTES:**
- DRAWINGS IN GENERAL ARE TO SCALE BUT FIGURED DIMENSIONS TAKE PRECEDENCE. THE CONTRACTOR ASSUMES FULL RESPONSIBILITY FOR THE ACCURACY OF INFORMATION SCALED FROM THE DRAWINGS.
 - ALL DIMENSIONS USE METRIC UNITS. DIMENSIONS SHOWN IN MILLIMETERS AND POINT ELEVATIONS AS METERS (UNLESS NOTED OTHERWISE).
 - SEE CIVIL DRAWING GAT FOR GENERAL ARRANGEMENT SITE PLAN.
 - SEE PROCESS LAYOUT DRAWING P11 FOR GENERAL ARRANGEMENT AND SITE YARD PIPING PLAN.

NOT FOR CONSTRUCTION

No.	Description	Date	By
0	ISSUED FOR TENDER	MAY 20/22	DAT

Revision or Issue

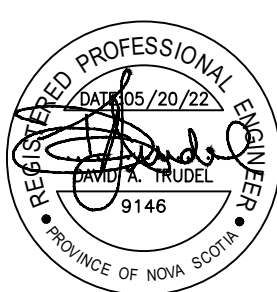


MUNICIPALITY OF EAST HANTS

SHUBENACADIE WWTP REPLACEMENT

CIVIL

MISCELLANEOUS DETAILS
SHEET 2 OF 2



CBCL No. 210814-01	Contract No. 210814
Date NOV 2021	Scale AS NOTED
Designed DAT	Drawn MAA
Checked MA	Approved DAT
Sheet No. 8	of 8
Drawing No.	C07